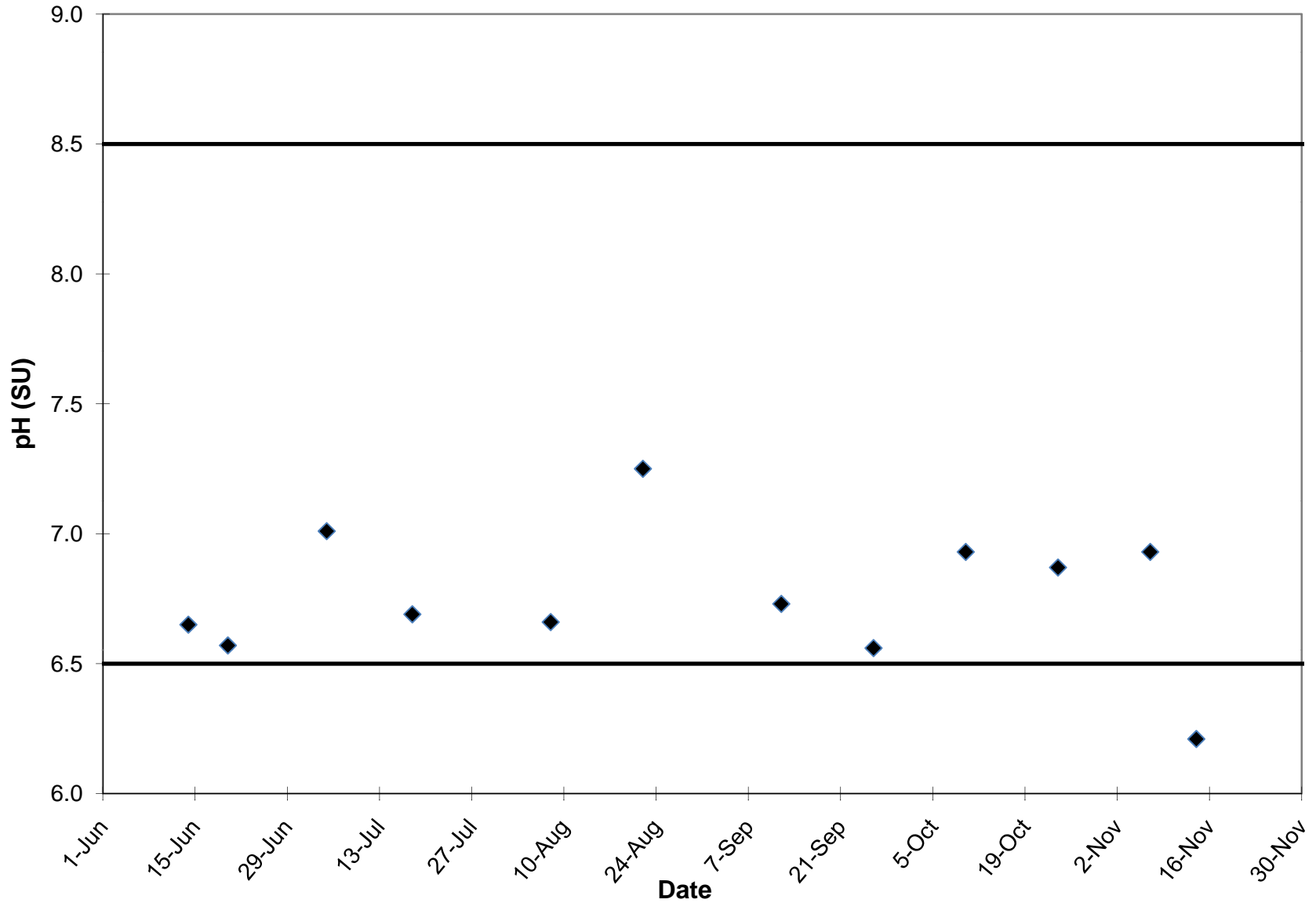
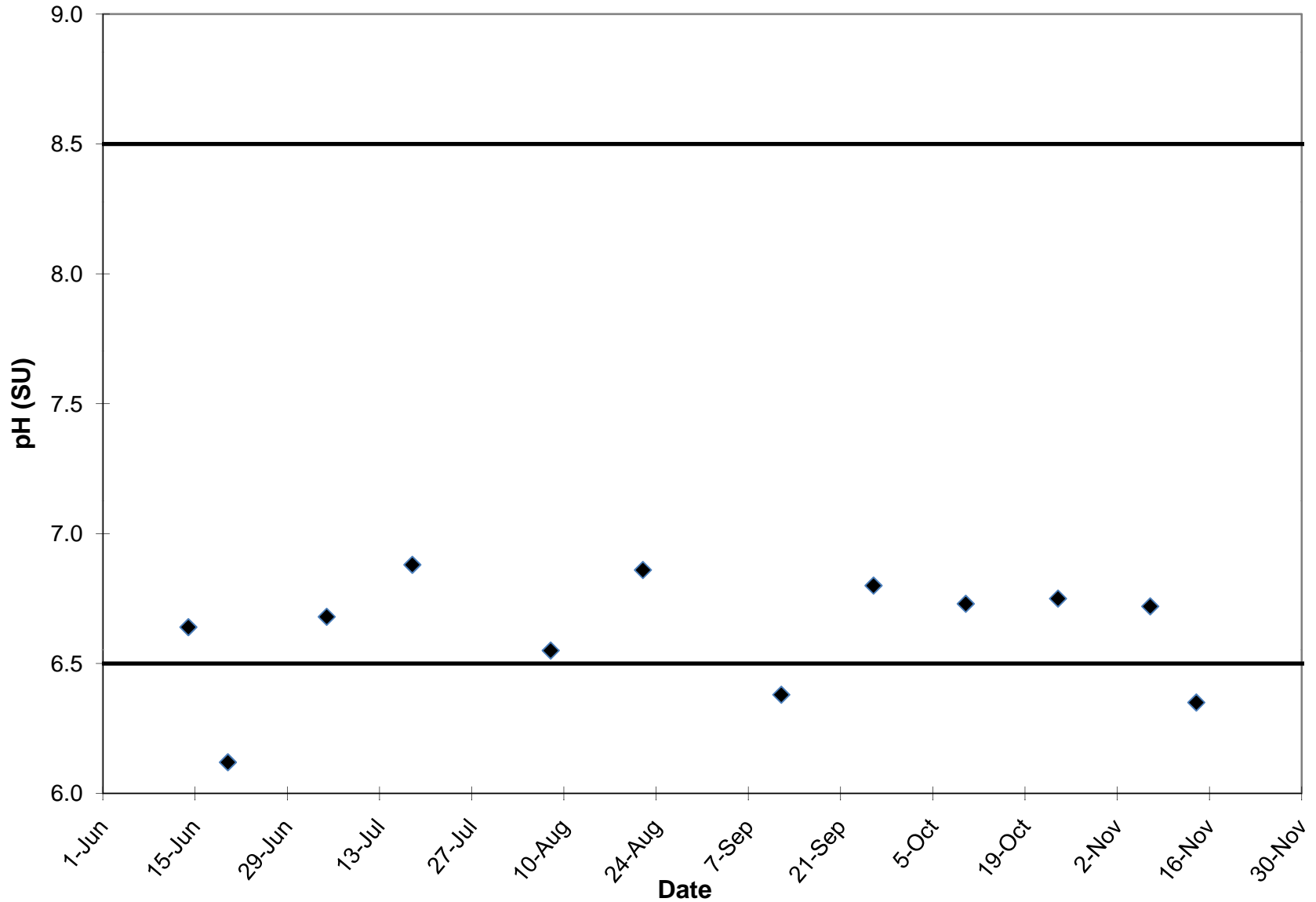


Station UNT2 pH



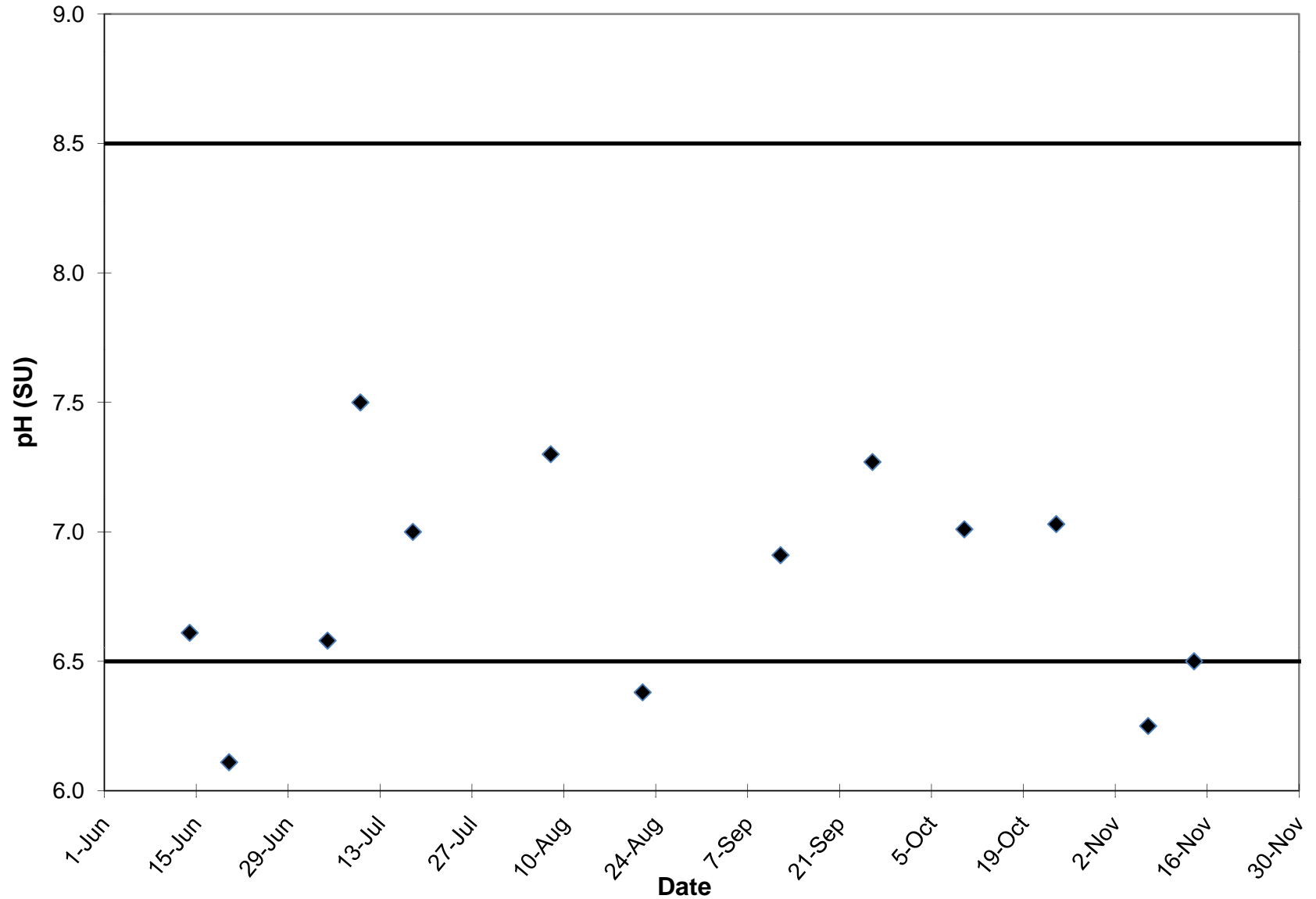
— Minimum pH Criteria = 6.5 S.U. — Maximum pH Criteria = 8.5 S.U.

Station UNT1 pH



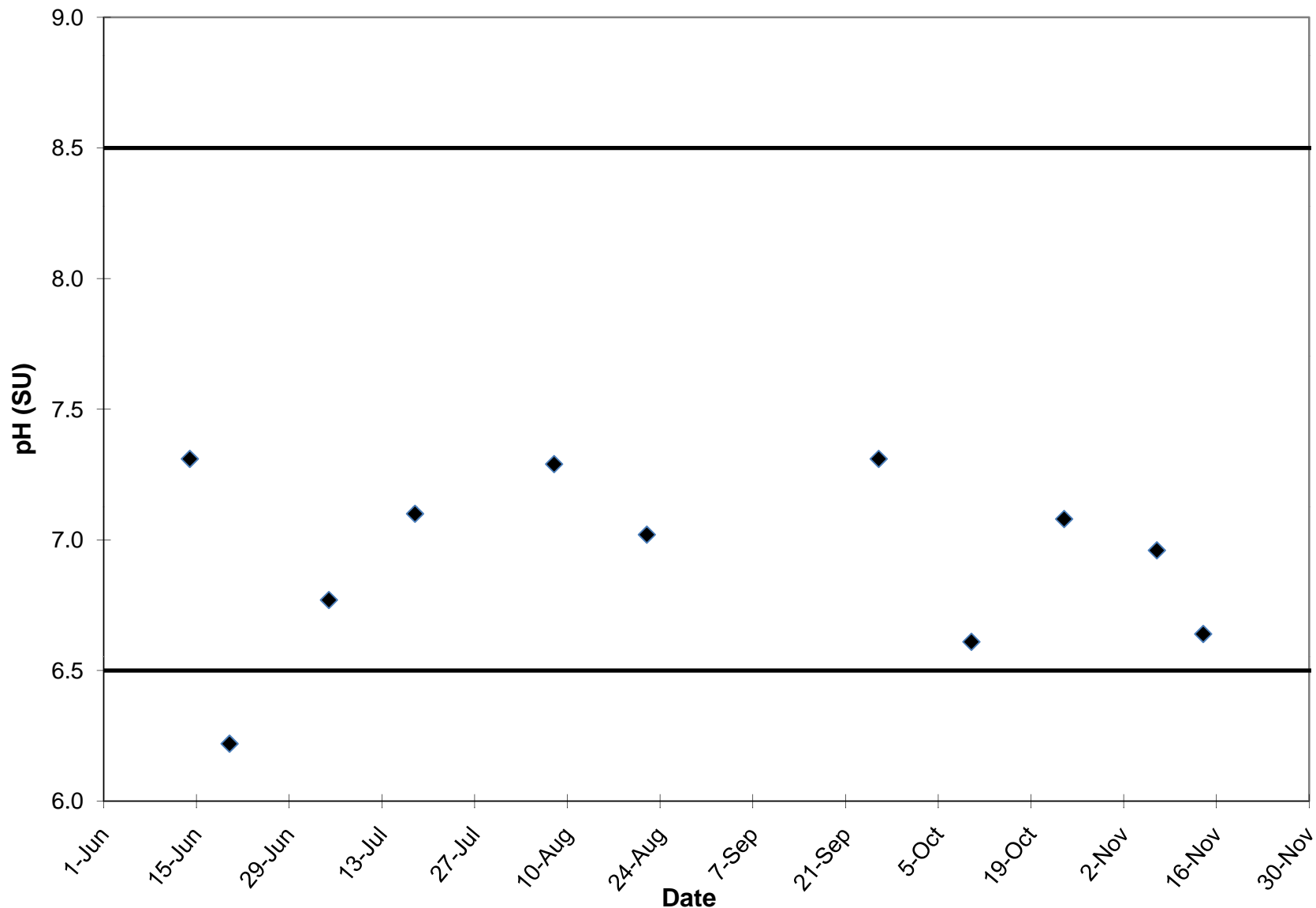
— Minimum pH Criteria = 6.5 S.U. — Maximum pH Criteria = 8.5 S.U.

Station N1 pH



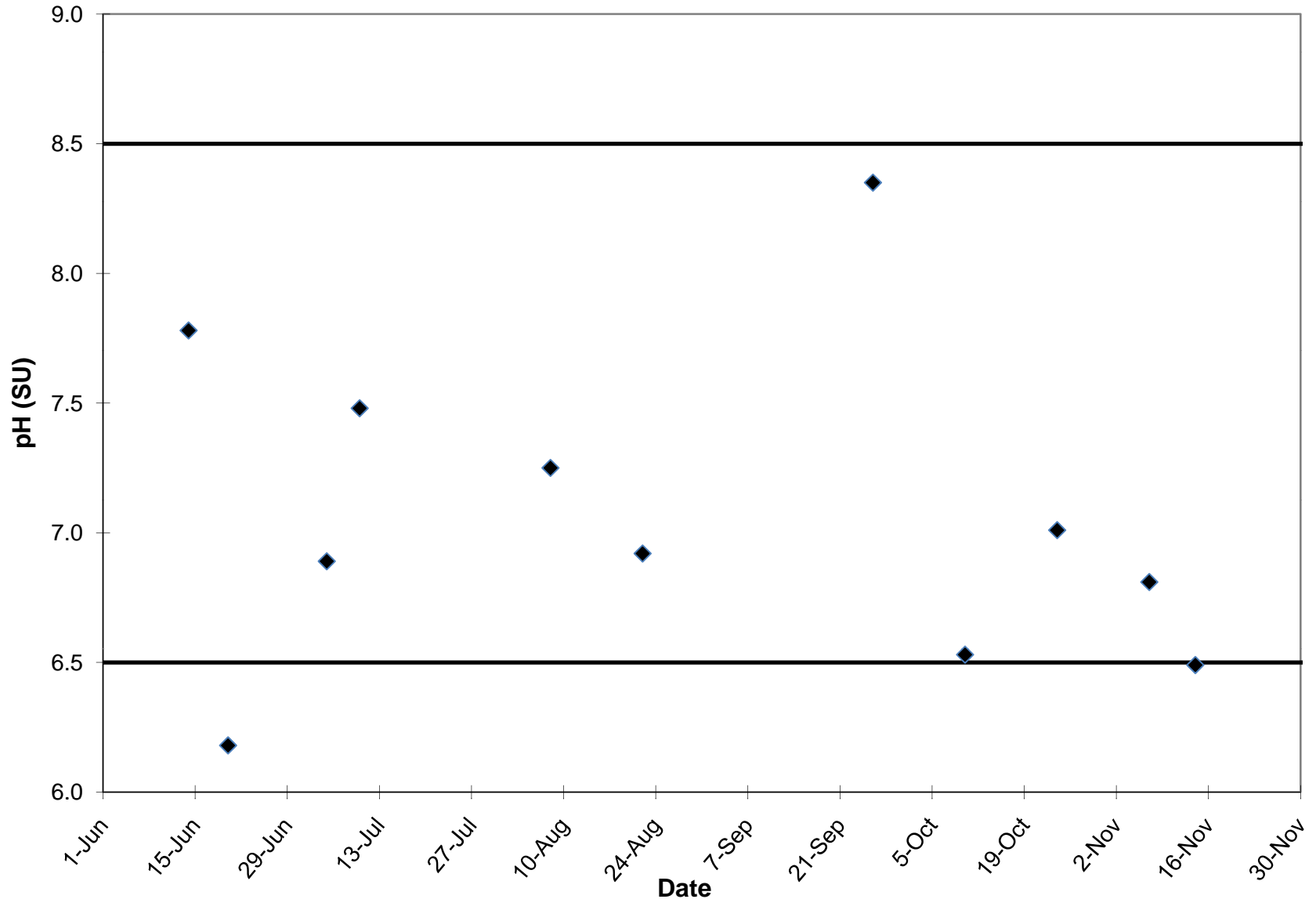
— Minimum pH Criteria = 6.5 S.U. — Maximum pH Criteria = 8.5 S.U.

Station TN3a
pH



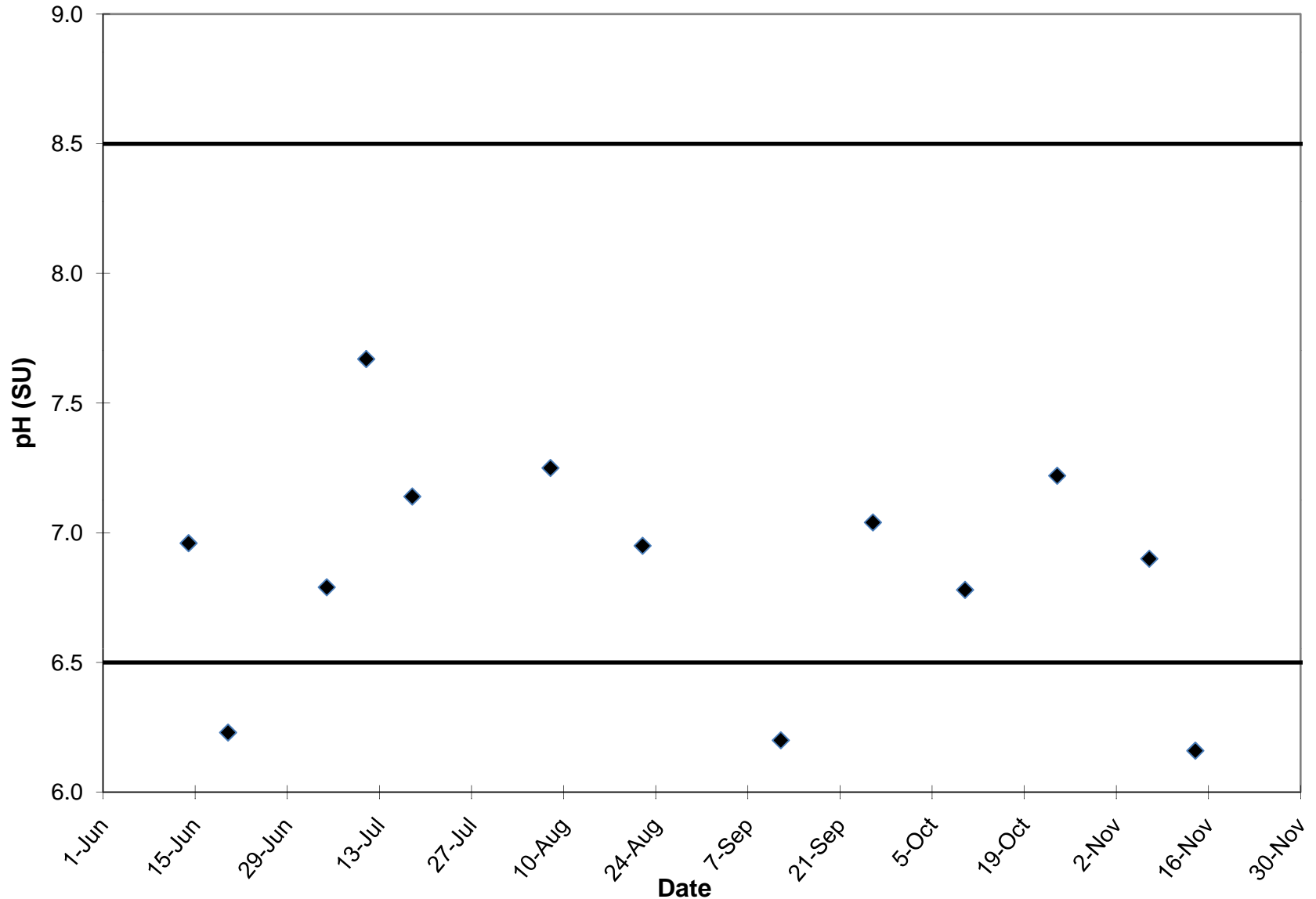
— Minimum pH Criteria = 6.5 S.U. — Maximum pH Criteria = 8.5 S.U.

Station TN3
pH



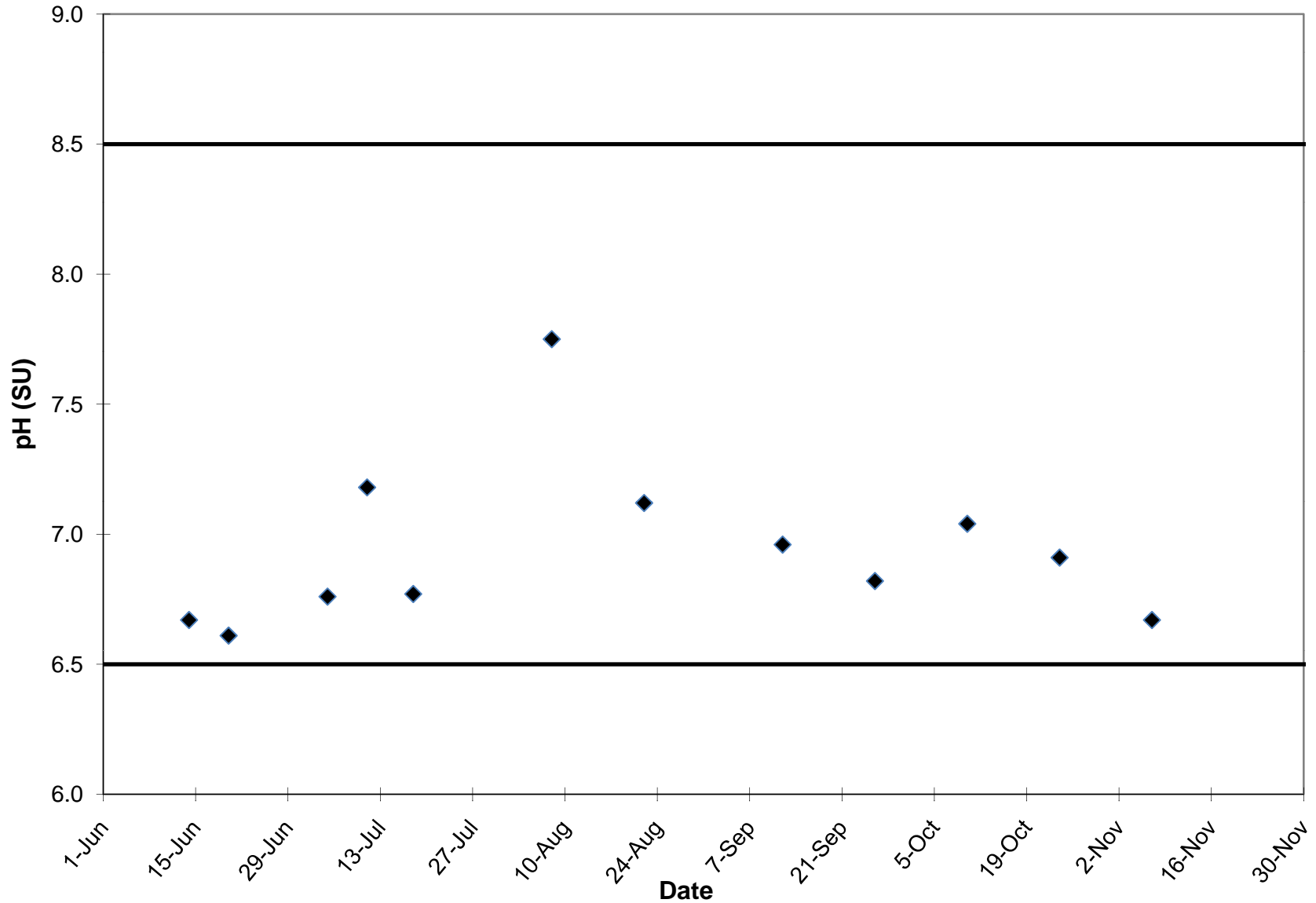
— Minimum pH Criteria = 6.5 S.U. — Maximum pH Criteria = 8.5 S.U.

Station SN1 pH



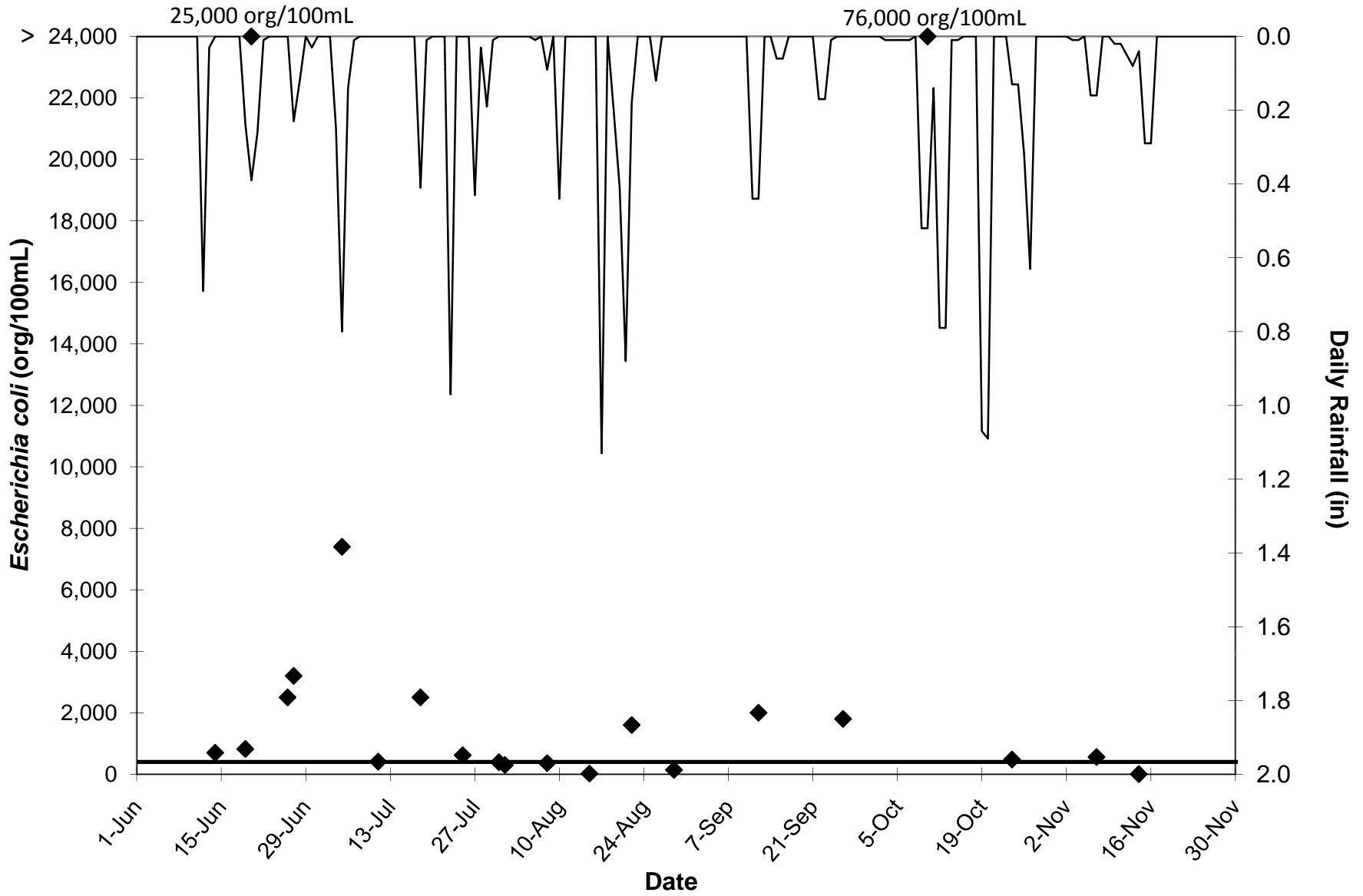
— Minimum pH Criteria = 6.5 S.U. — Maximum pH Criteria = 8.5 S.U.

Station FN1 pH



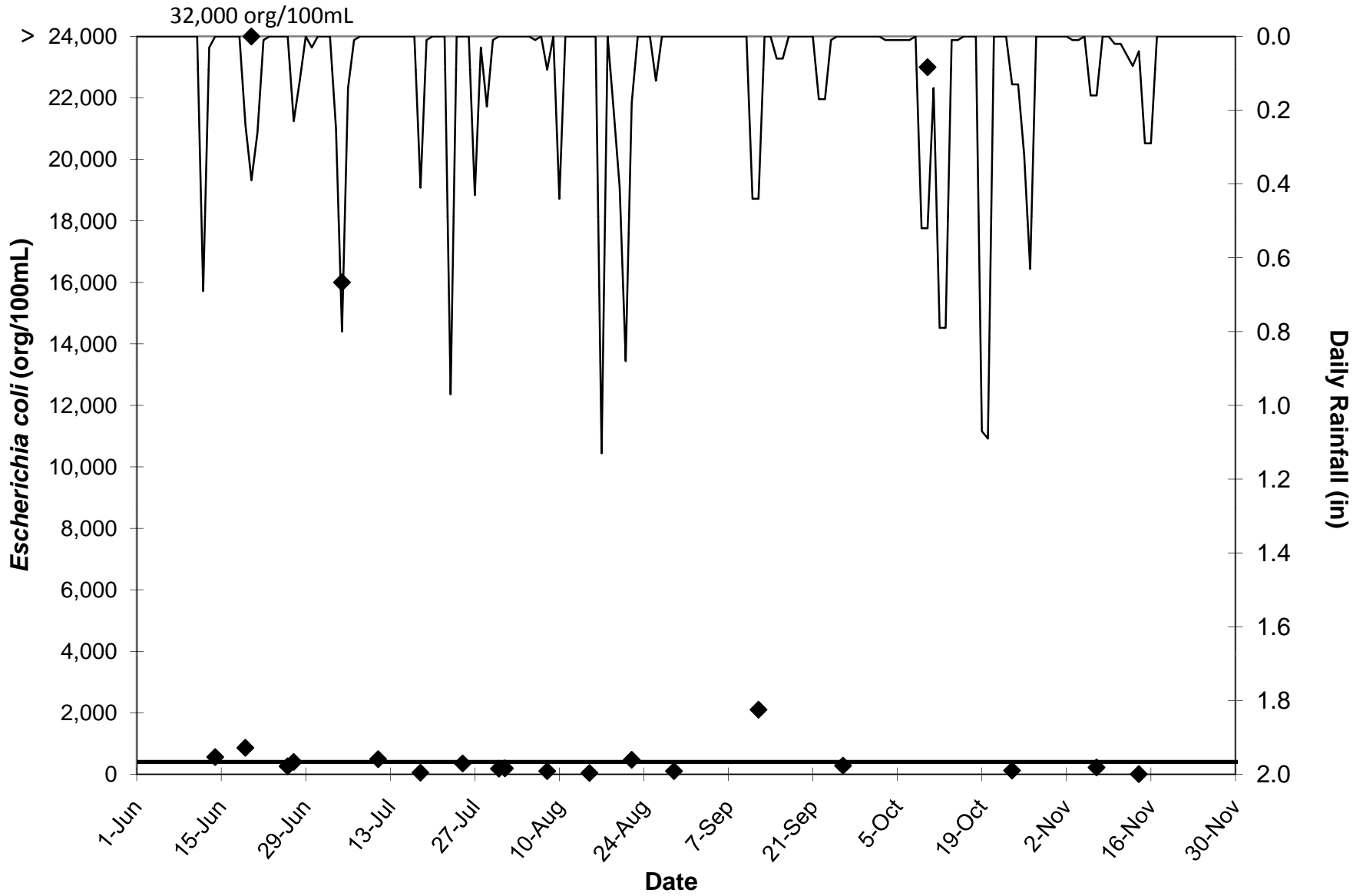
— Minimum pH Criteria = 6.5 S.U. — Maximum pH Criteria = 8.5 S.U.

Station UNT2 *Escherichia coli*



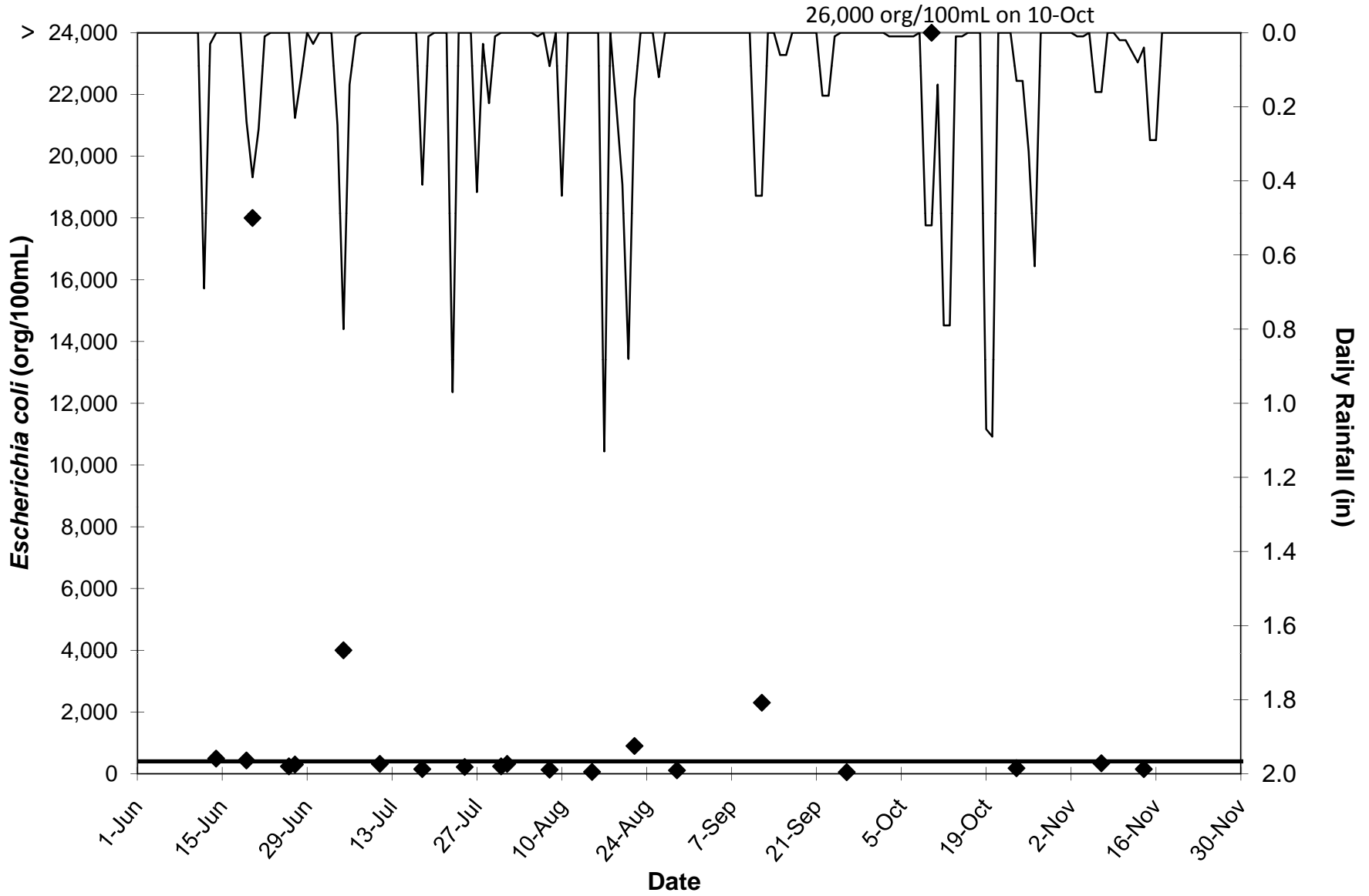
— Escherichia coli Criteria = 235 counts/100 mL — Daily Rainfall

Station UNT1
Escherichia coli



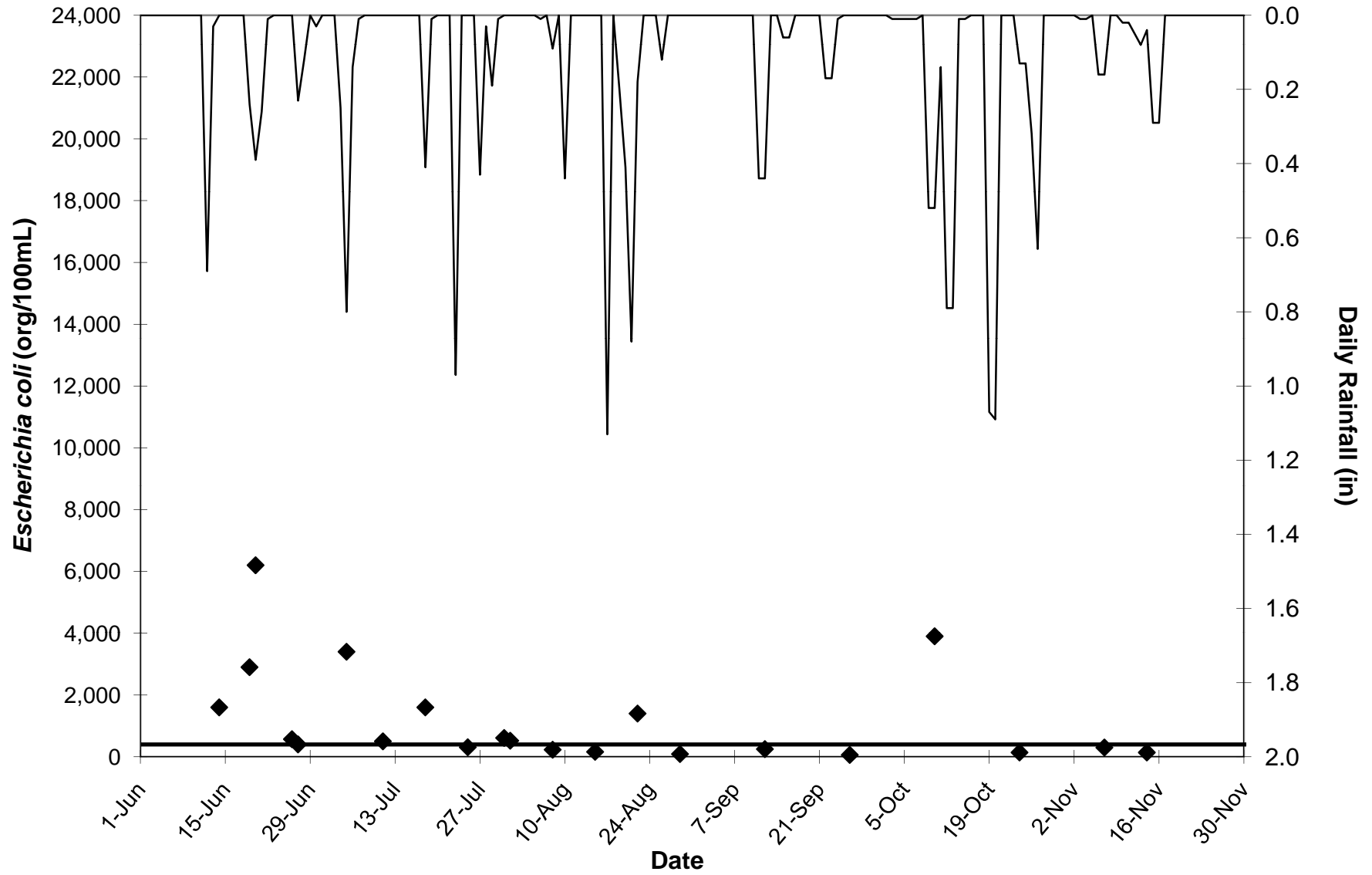
— Escherichia coli Criteria = 235 counts/100 mL — Daily Rainfall

Station N1
Escherichia coli



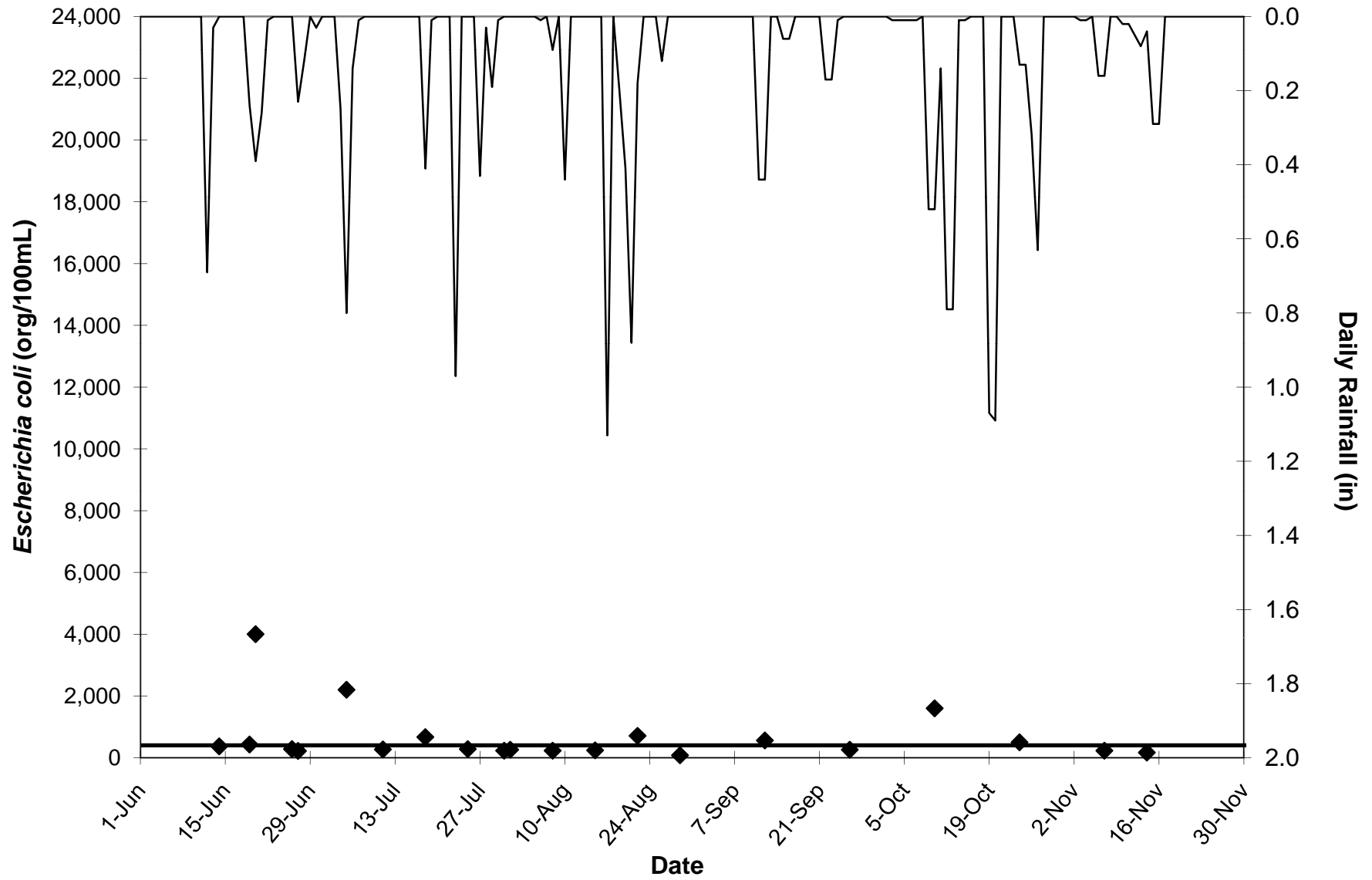
— Escherichia coli Criteria = 235 counts/100 mL — Daily Rainfall

Station TN3a
Escherichia coli



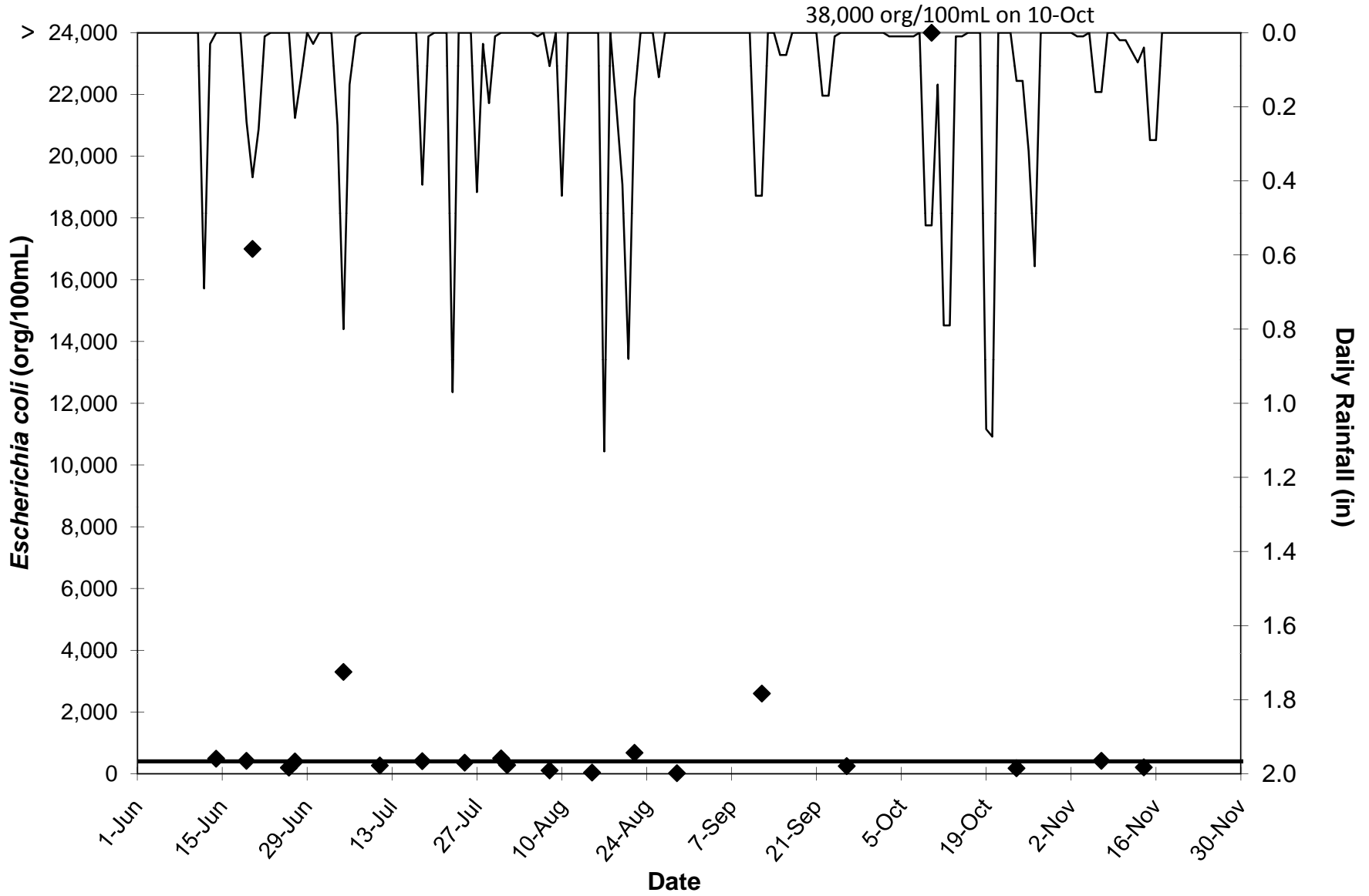
— Escherichia coli Criteria = 235 counts/100 mL — Daily Rainfall

Station TN3
Escherichia coli



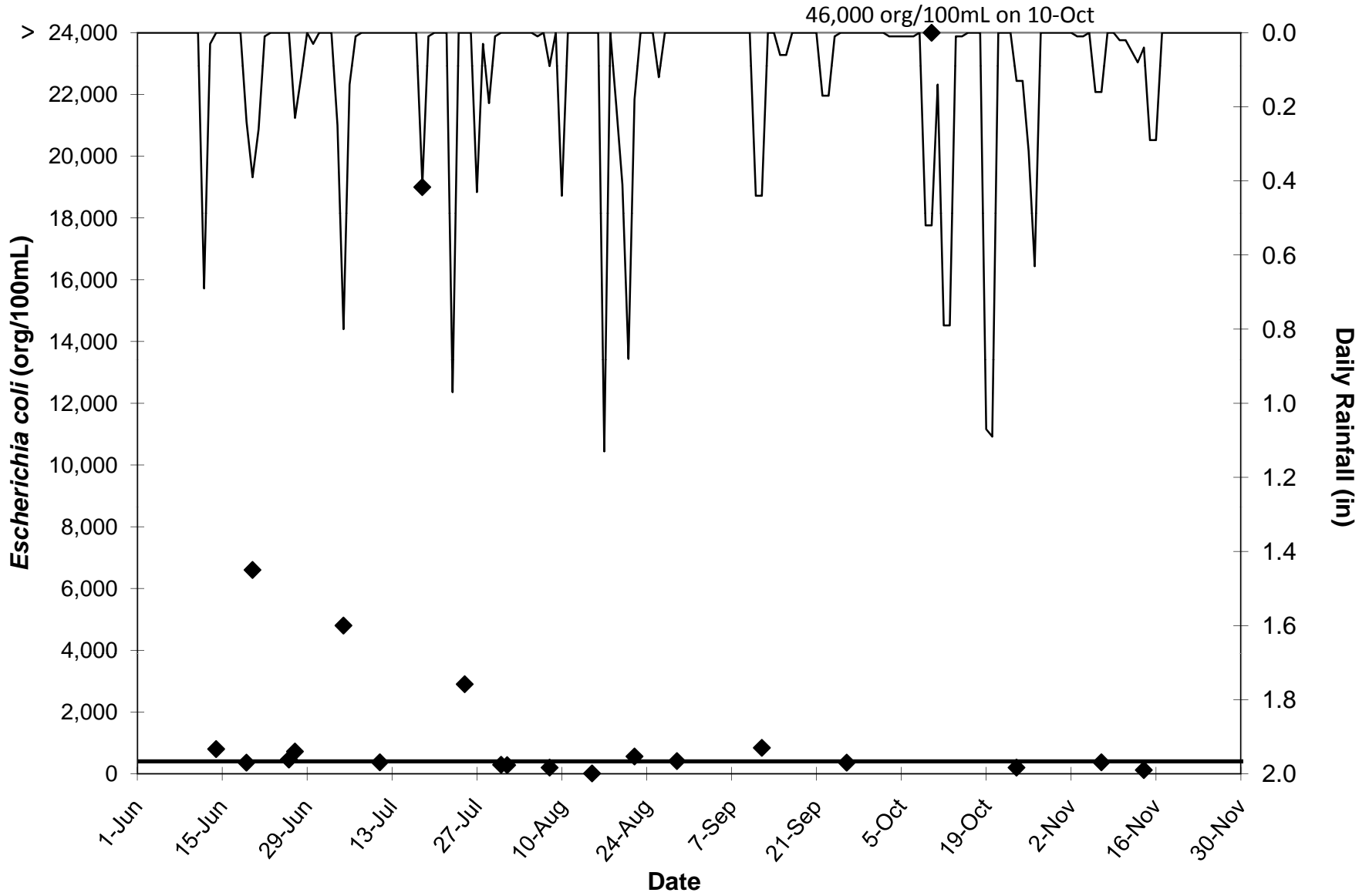
— Escherichia coli Criteria = 235 counts/100 mL — Daily Rainfall

Station SN1
Escherichia coli



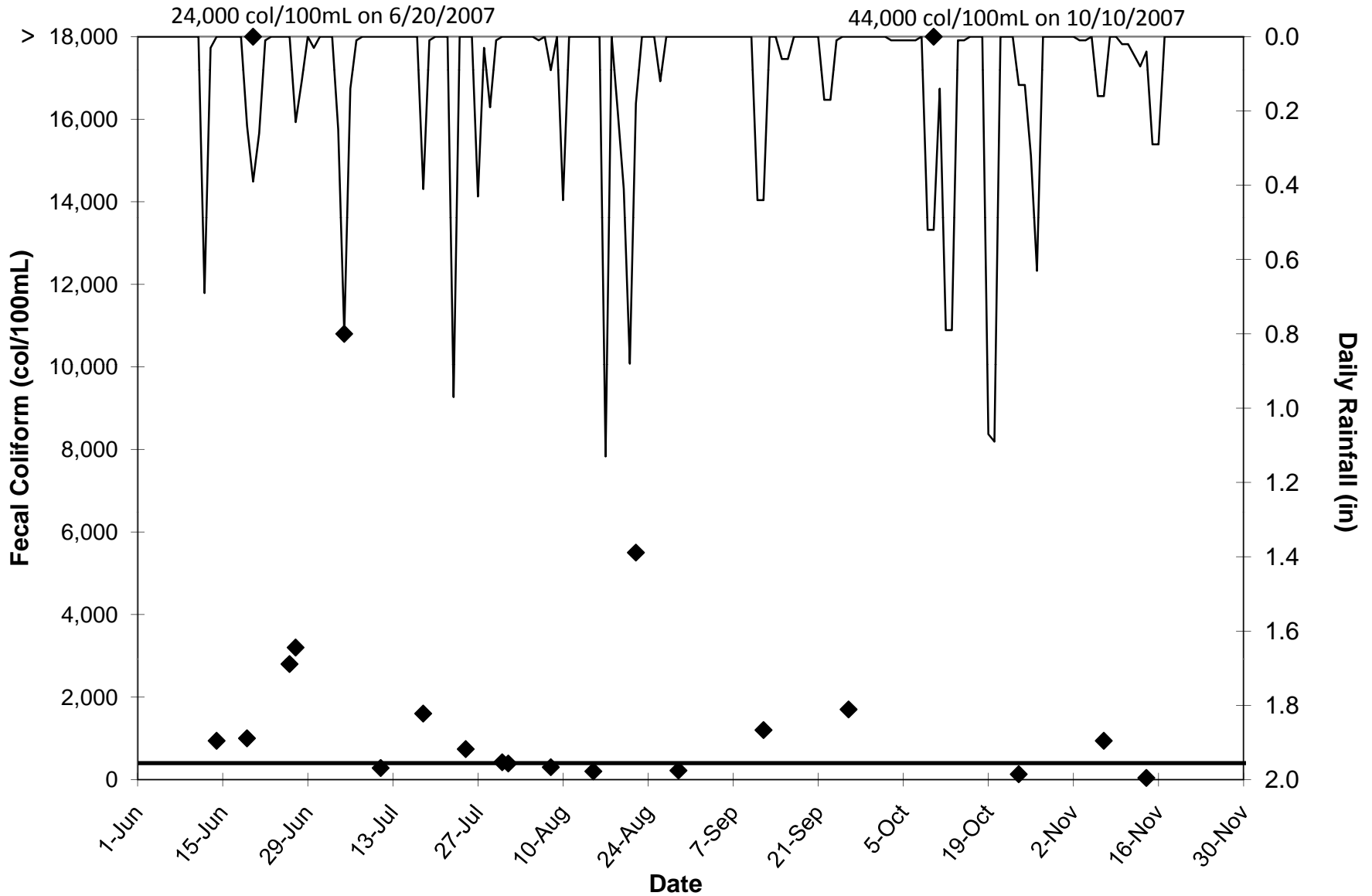
— Escherichia coli Criteria = 235 counts/100 mL — Daily Rainfall

Station FN1
Escherichia coli



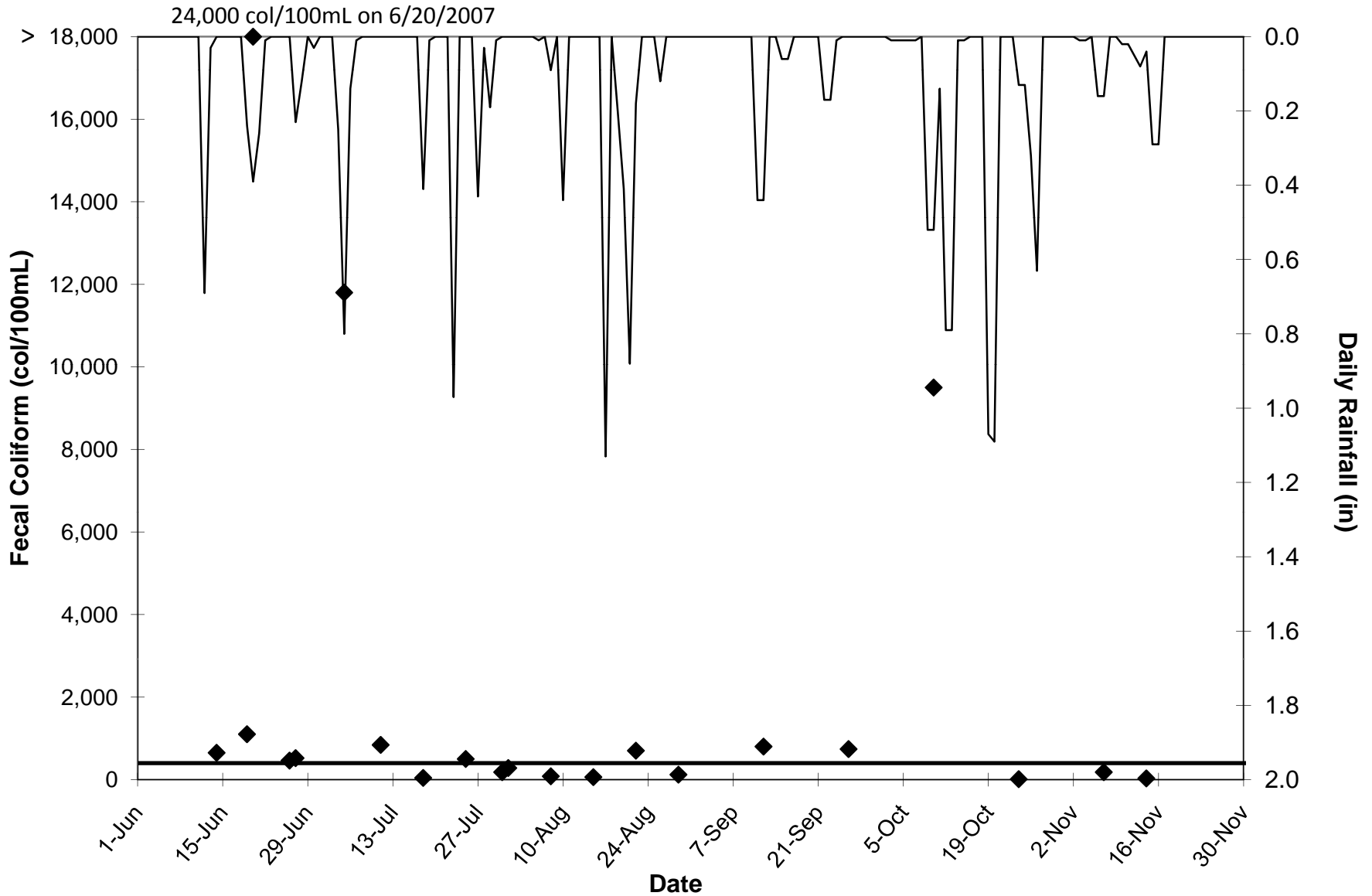
— Escherichia coli Criteria = 235 counts/100 mL — Daily Rainfall

Station UNT2 Fecal Coliform



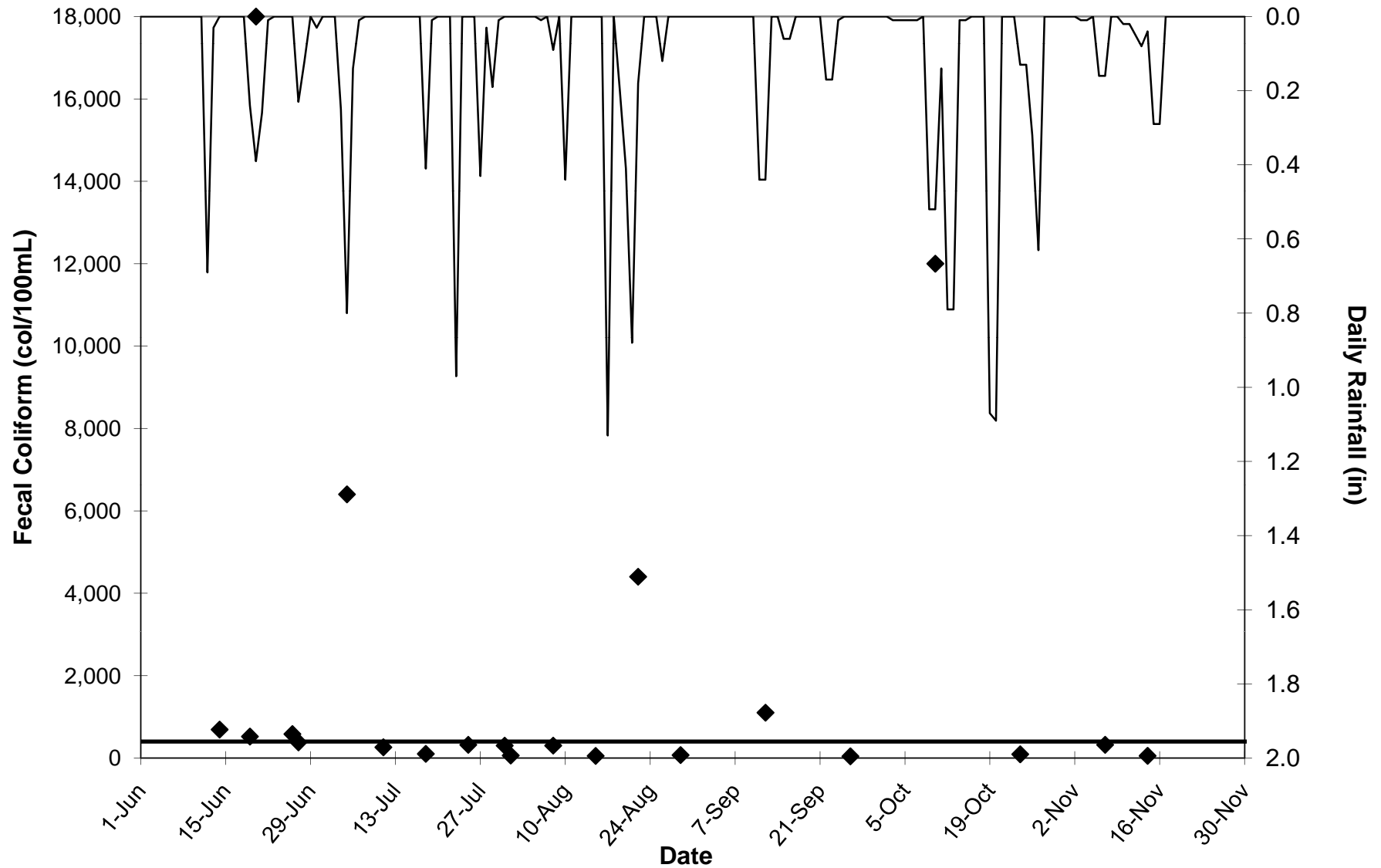
— Fecal Coliform Criteria = 400 counts/100 mL — Daily Rainfall

Station UNT1 Fecal Coliform



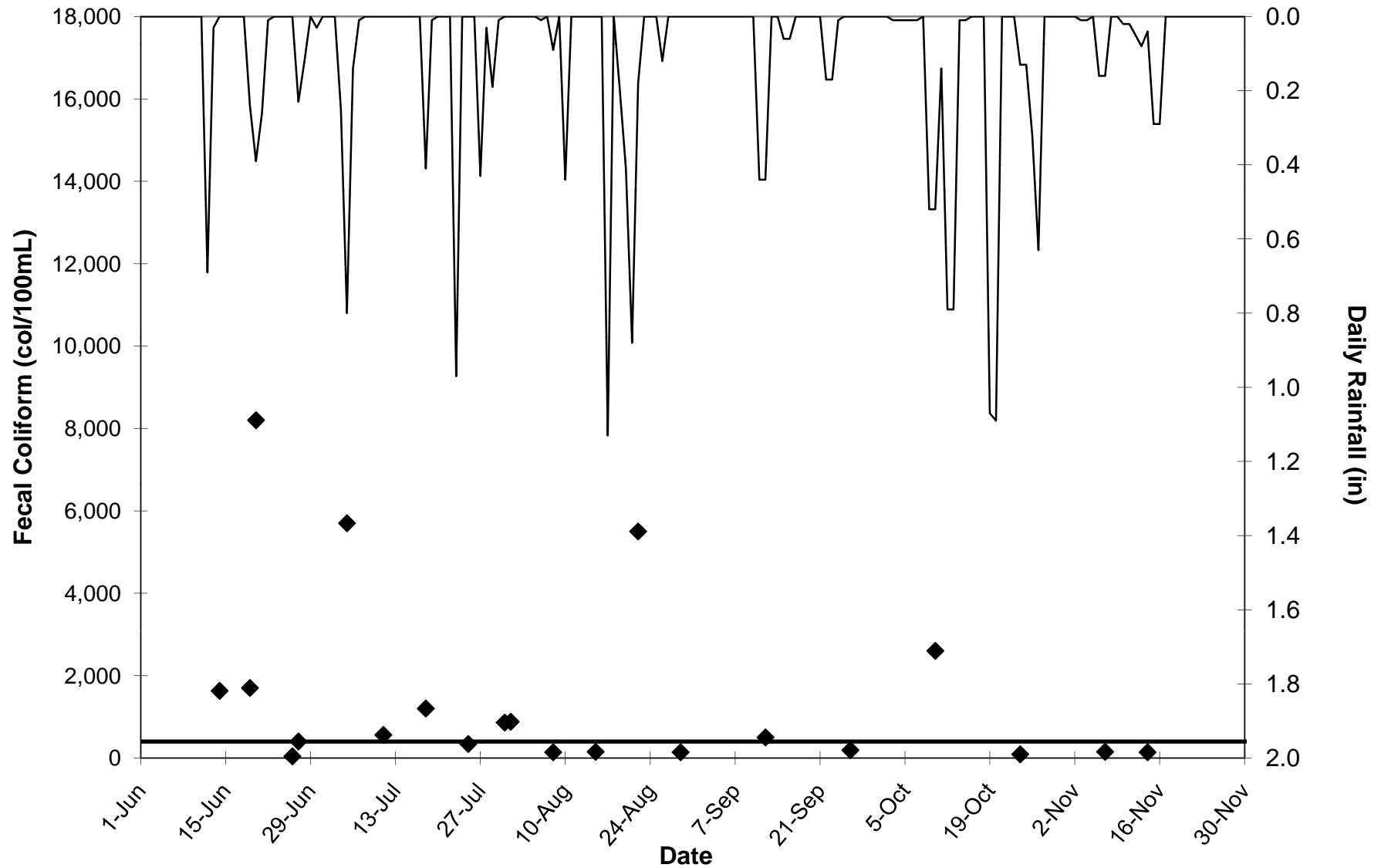
— Fecal Coliform Criteria = 400 counts/100 mL — Daily Rainfall

Station N1 Fecal Coliform



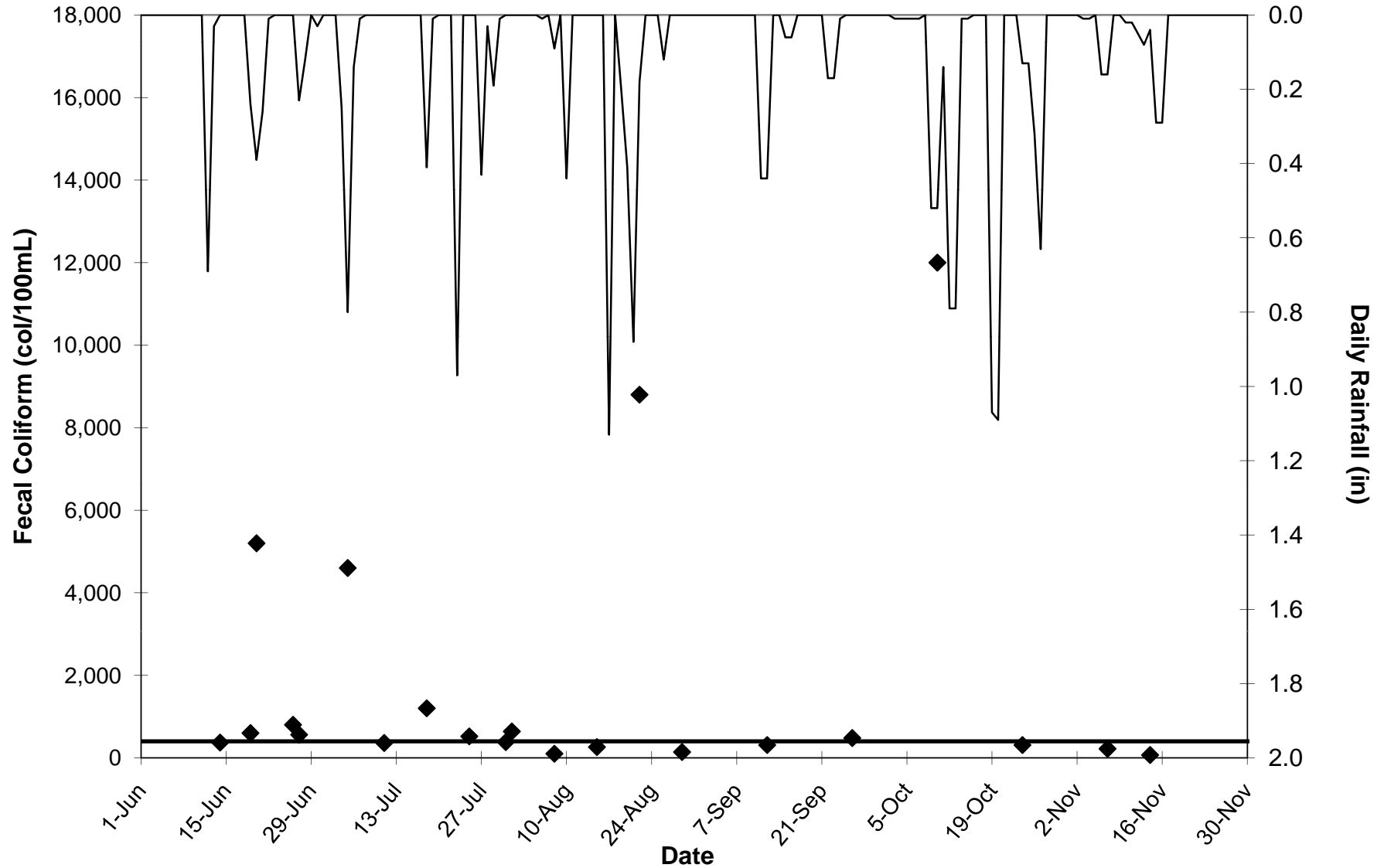
— Fecal Coliform Criteria = 400 counts/100 mL — Daily Rainfall

Station TN3a Fecal Coliform



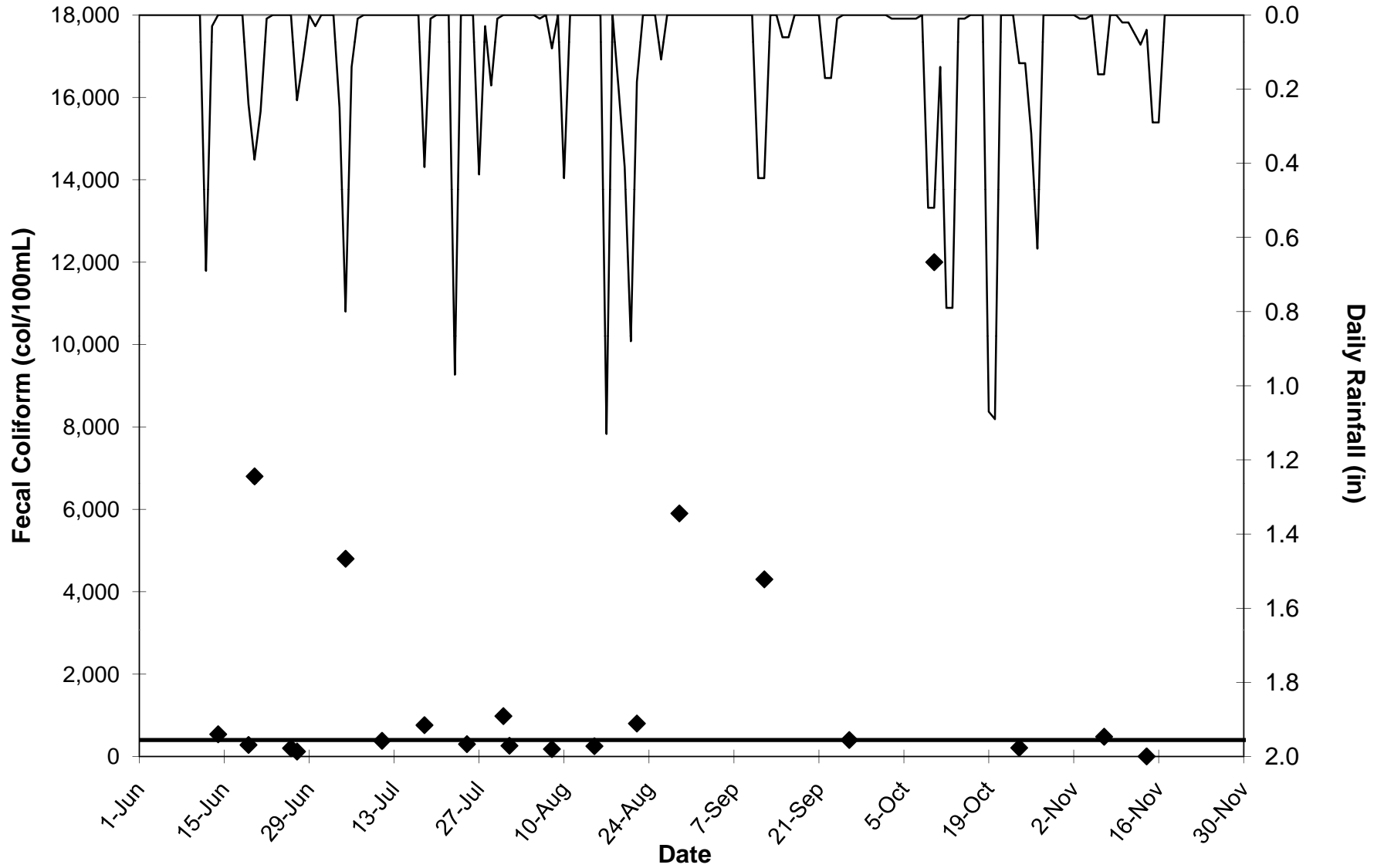
— Fecal Coliform Criteria = 400 counts/100 mL — Daily Rainfall

Station TN3 Fecal Coliform



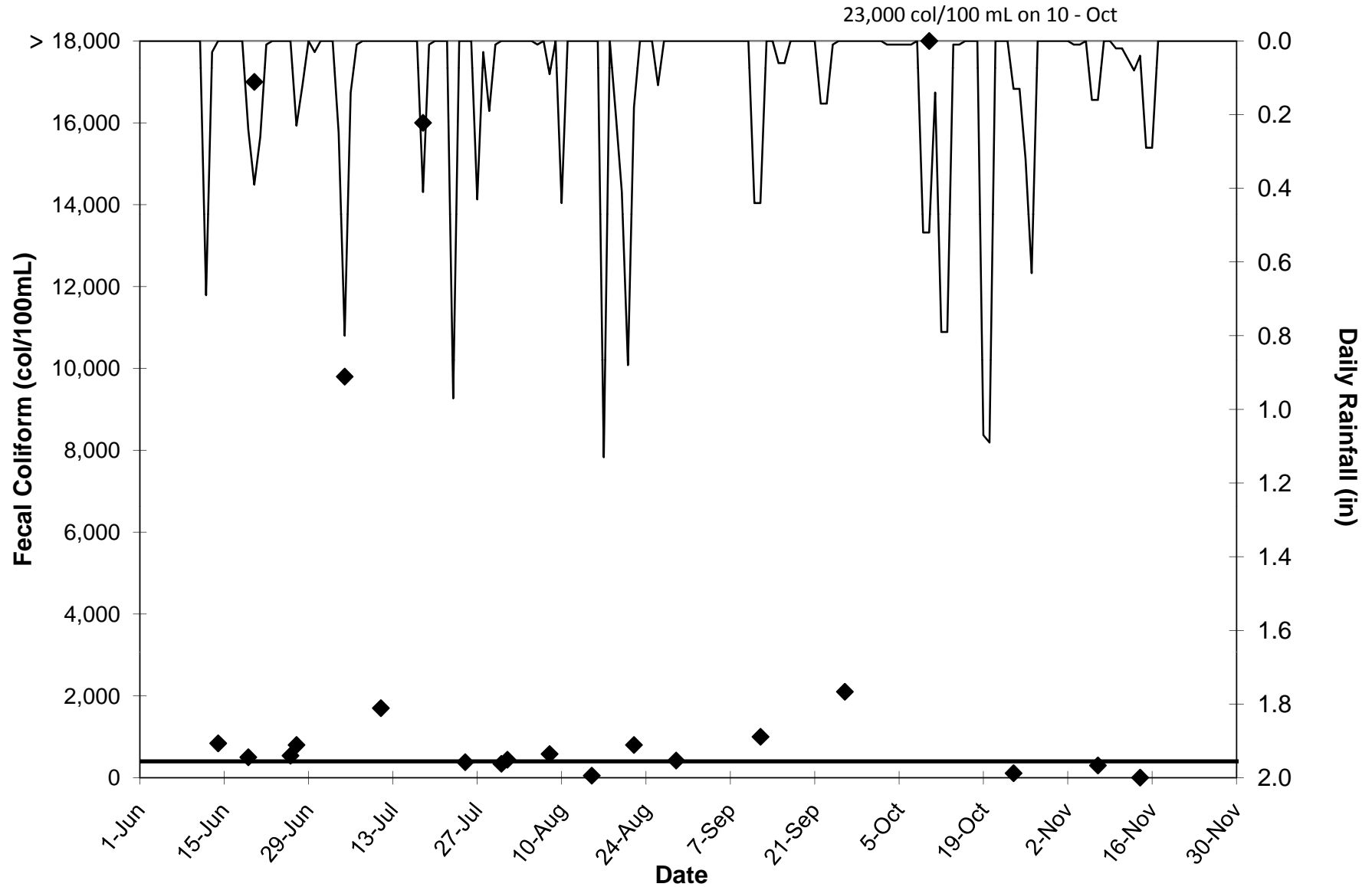
— Fecal Coliform Criteria = 400 counts/100 mL — Daily Rainfall

Station SN1 Fecal Coliform



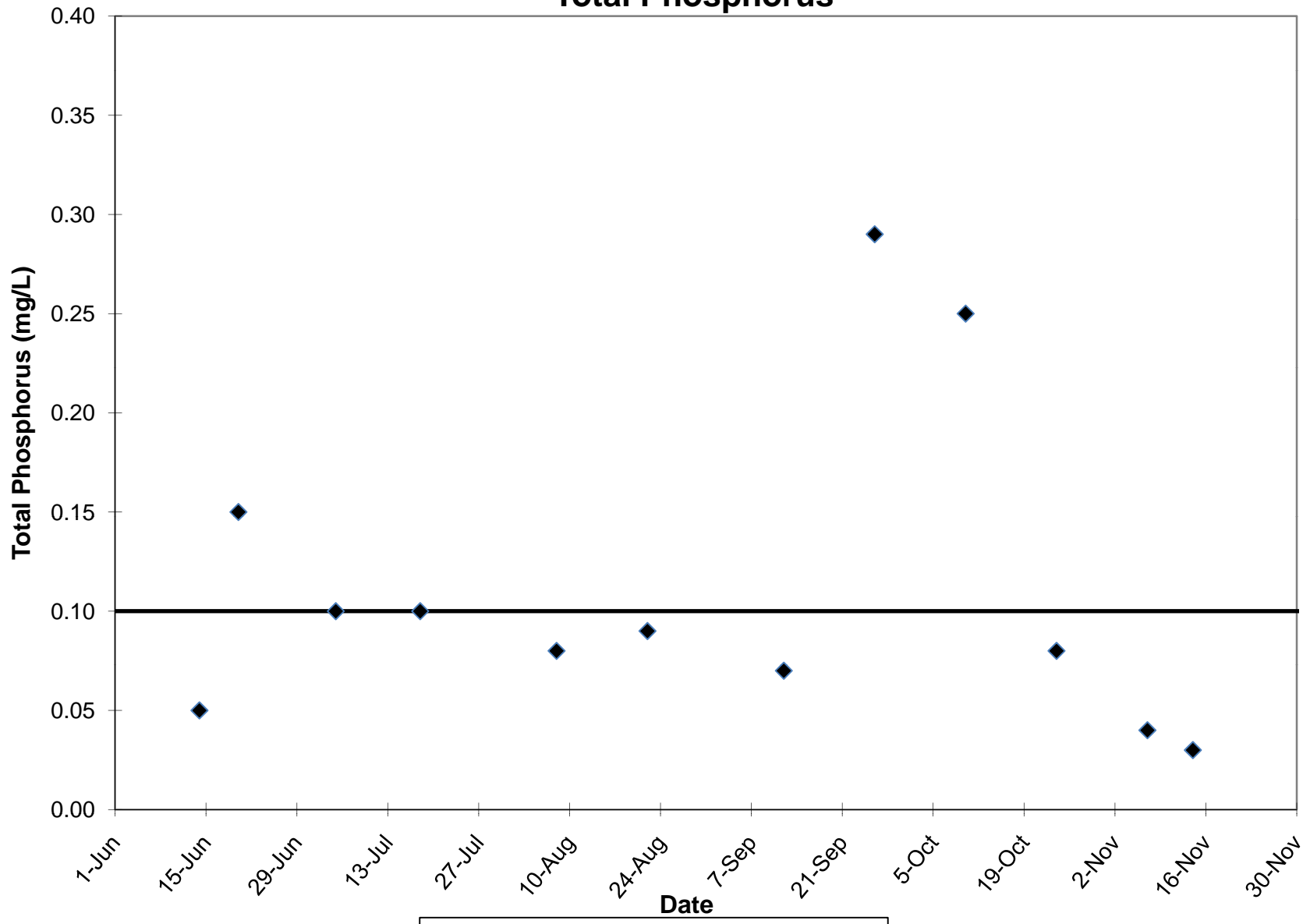
— Fecal Coliform Criteria = 400 counts/100 mL — Daily Rainfall

Station FN1 Fecal Coliform



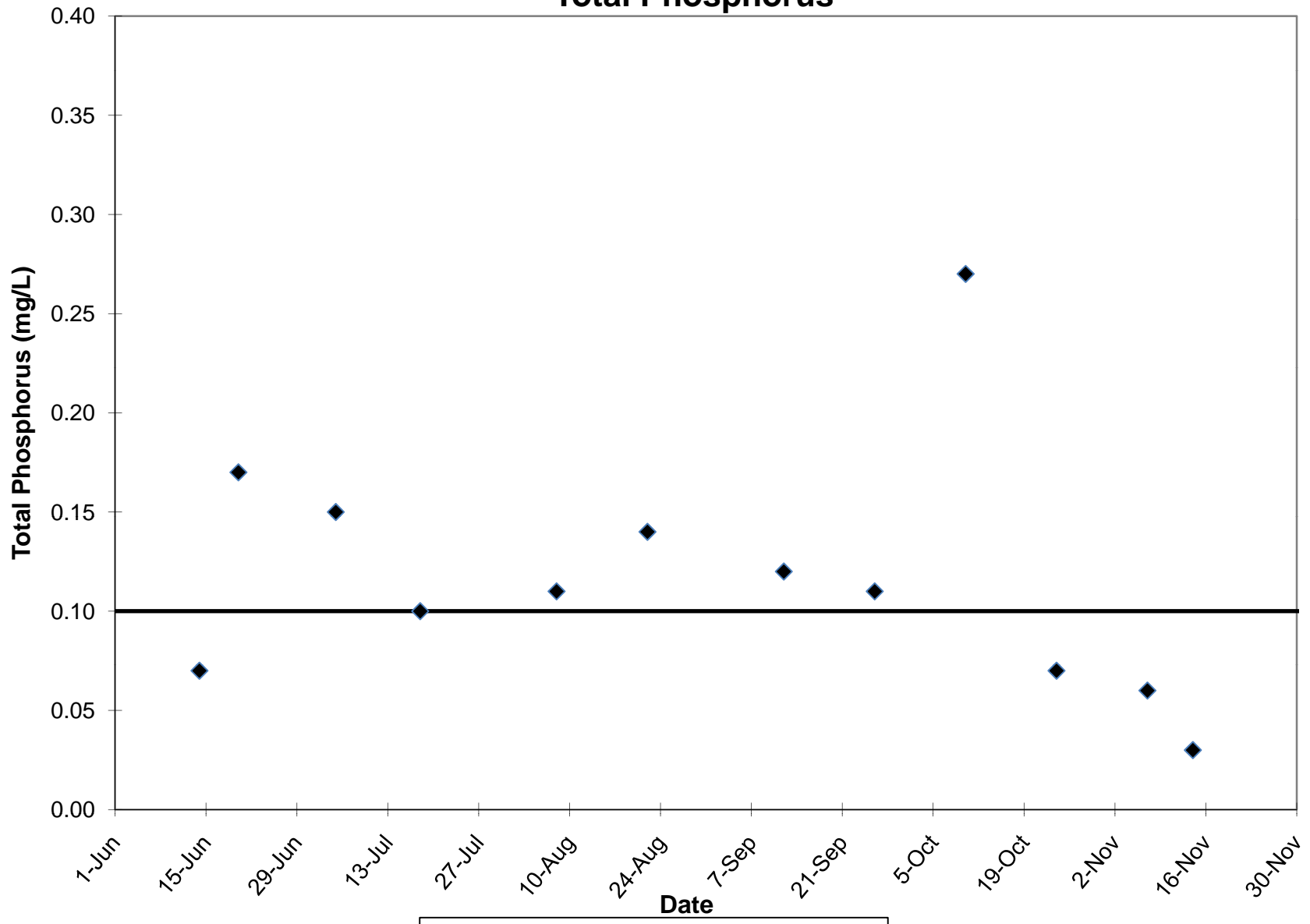
— Fecal Coliform Criteria = 400 counts/100 mL — Daily Rainfall

Station UNT2
Total Phosphorus



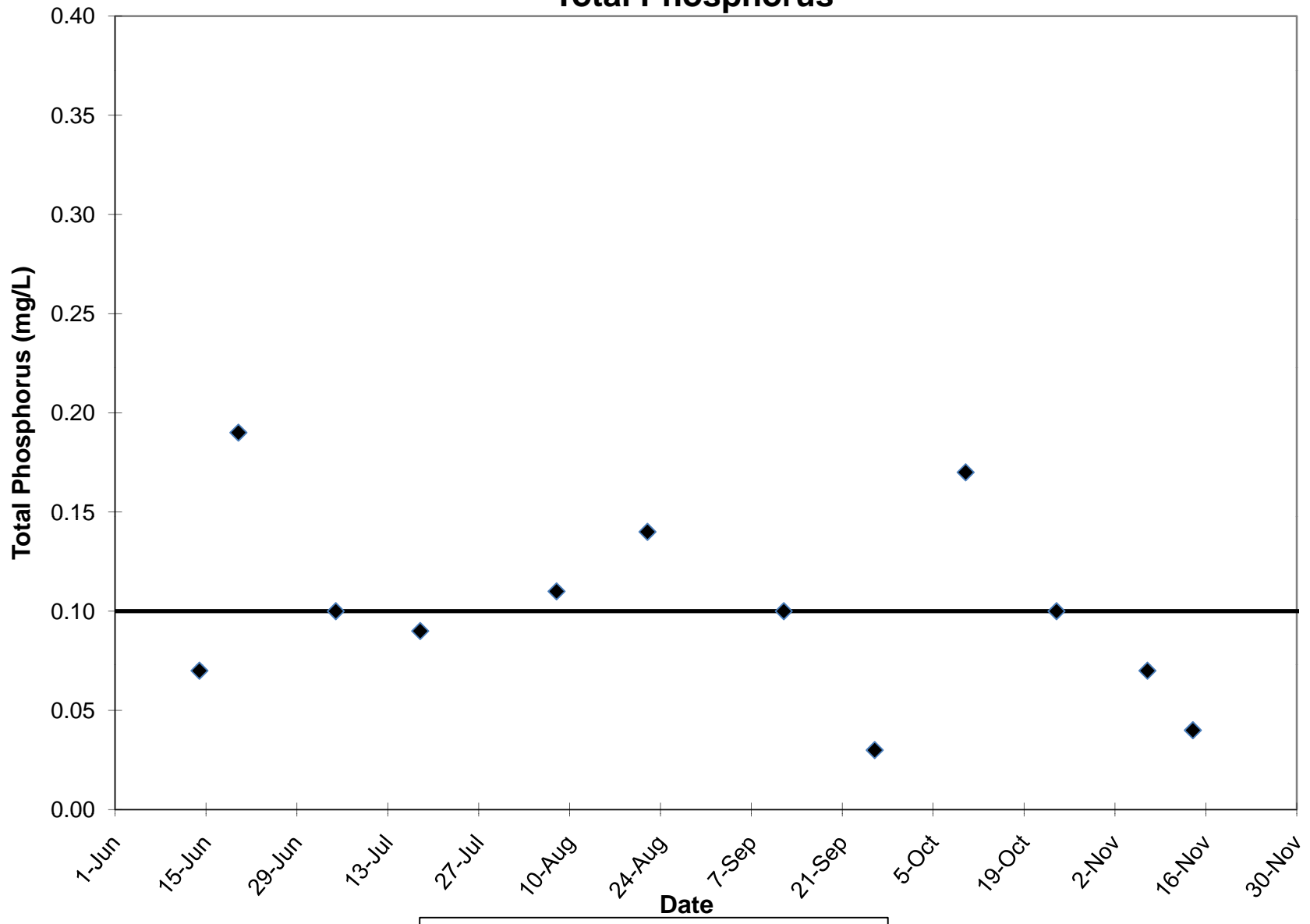
— Total Phosphorus Criteria = 0.1 mg/L

Station UNT1
Total Phosphorus



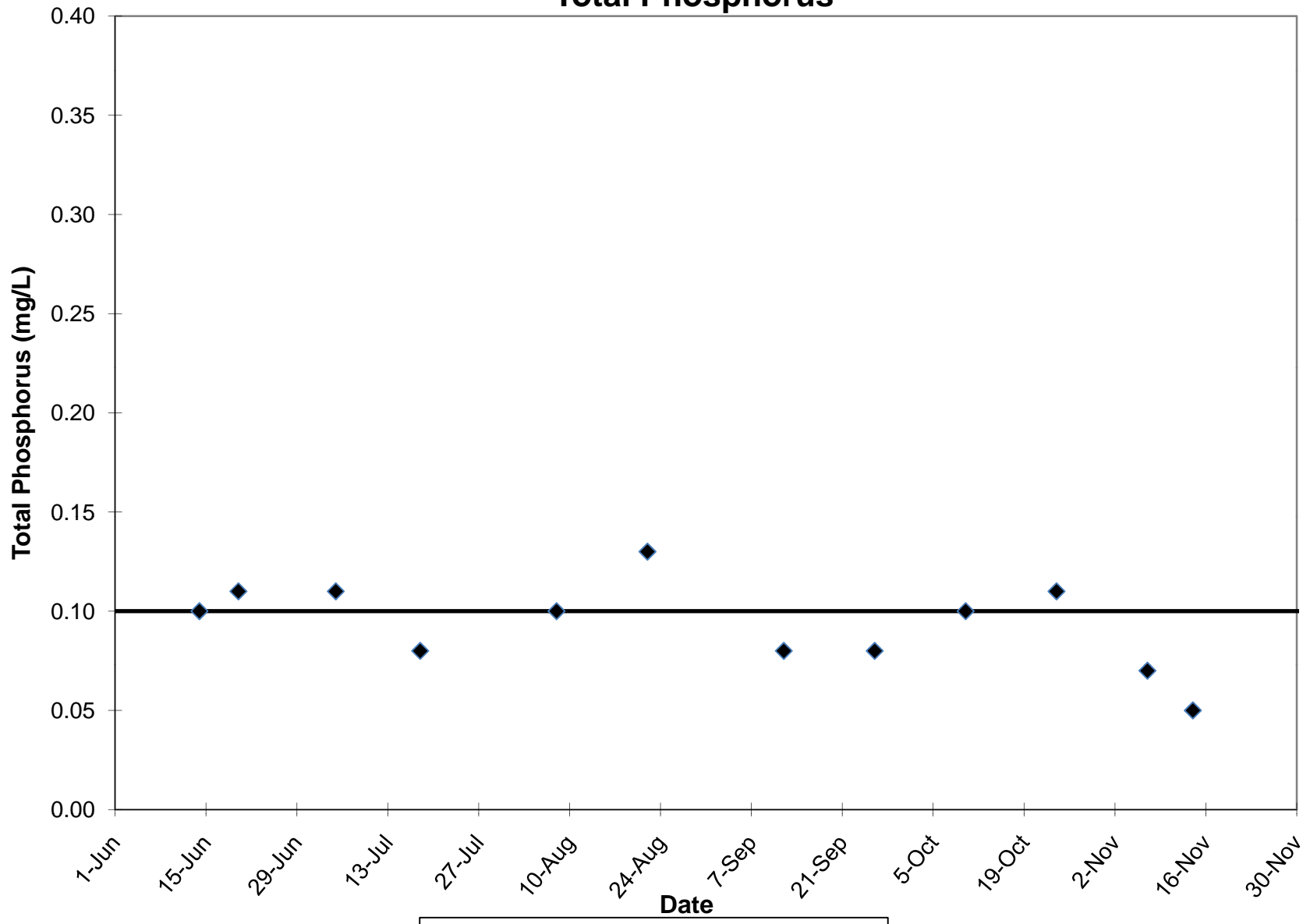
— Total Phosphorus Criteria = 0.1 mg/L

Station N1
Total Phosphorus



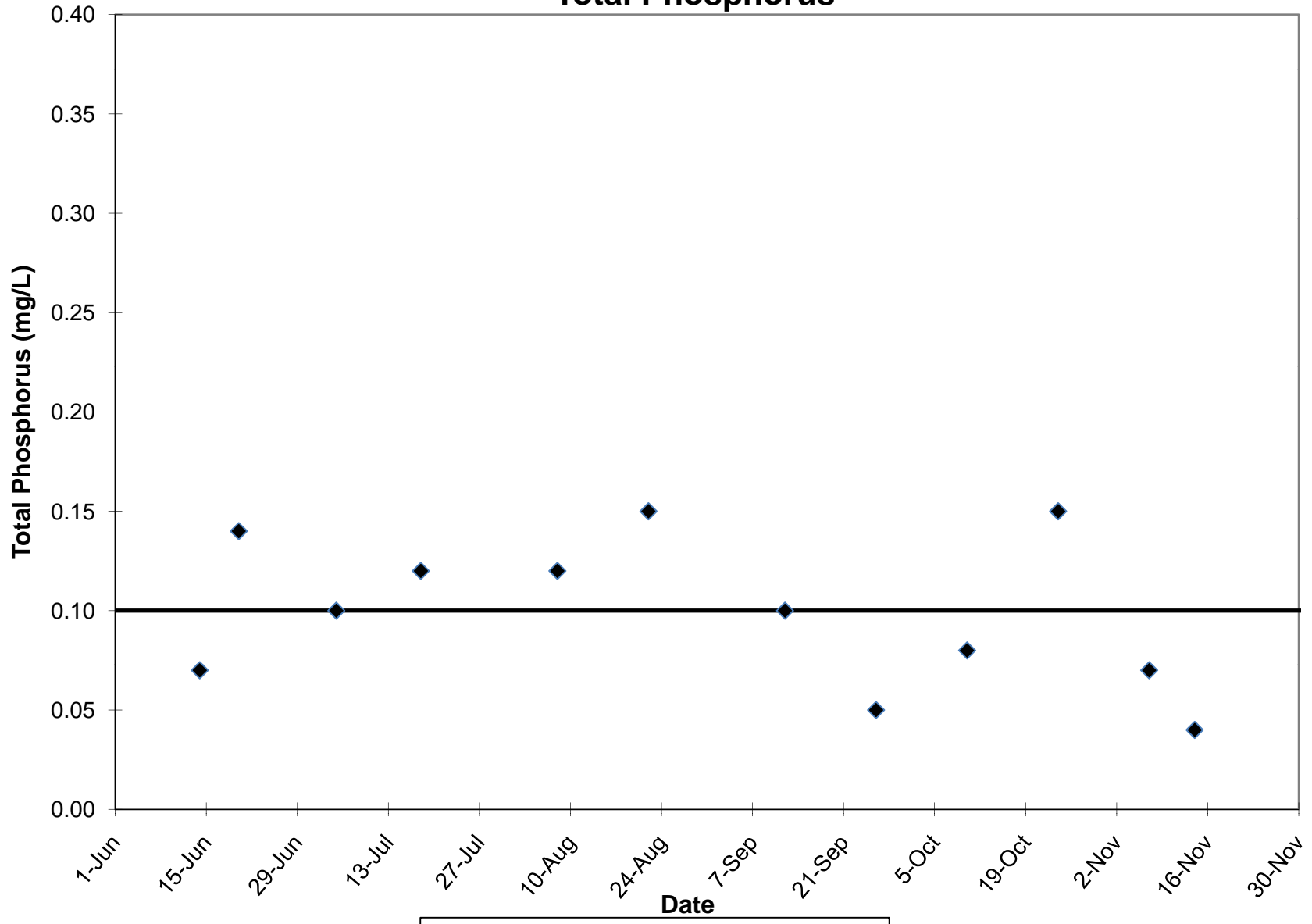
— Total Phosphorus Criteria = 0.1 mg/L

Station TN3a
Total Phosphorus



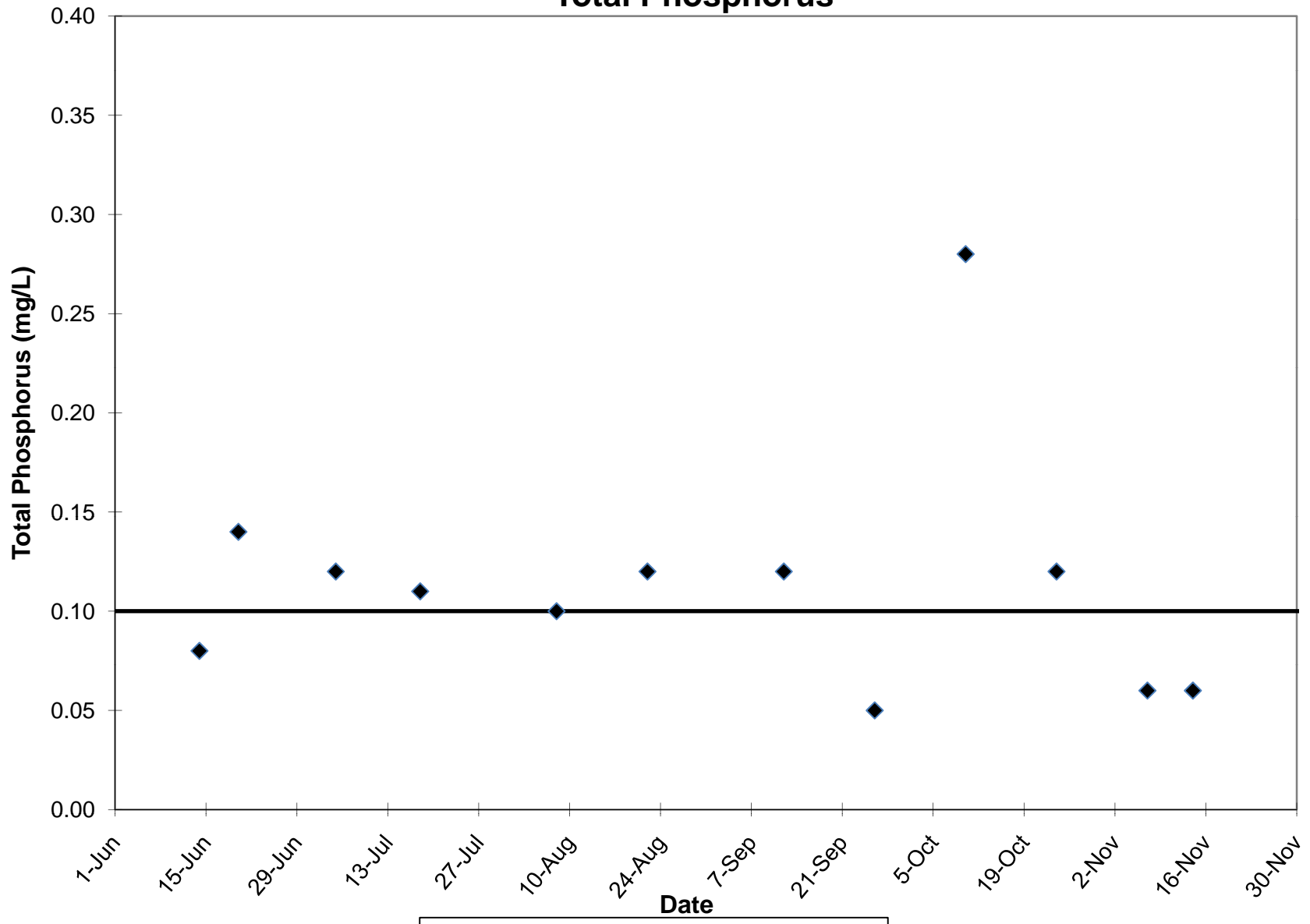
— Total Phosphorus Criteria = 0.1 mg/L

Station TN3
Total Phosphorus



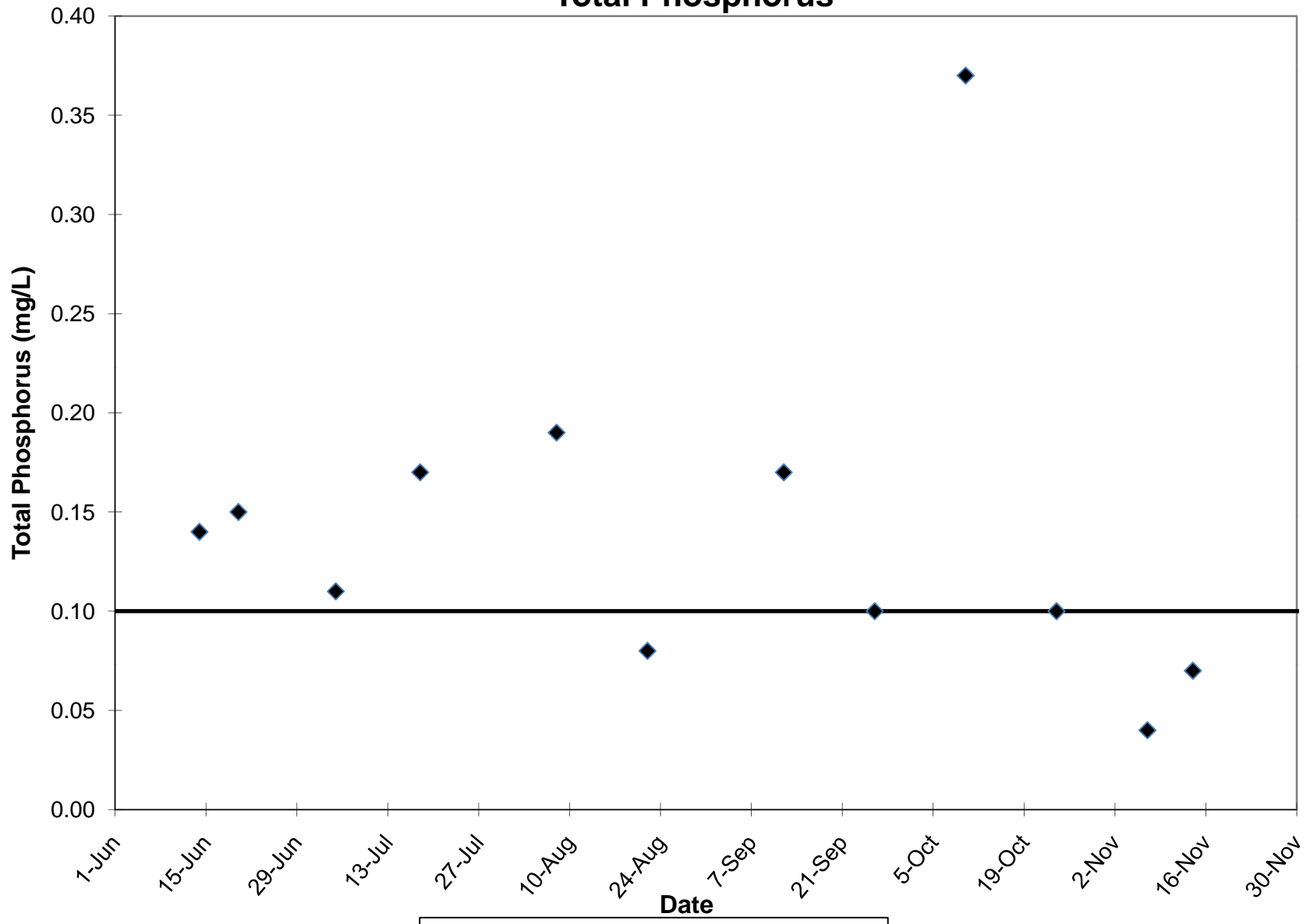
— Total Phosphorus Criteria = 0.1 mg/L

Station SN1
Total Phosphorus



— Total Phosphorus Criteria = 0.1 mg/L

Station FN1 Total Phosphorus



— Total Phosphorus Criteria = 0.1 mg/L