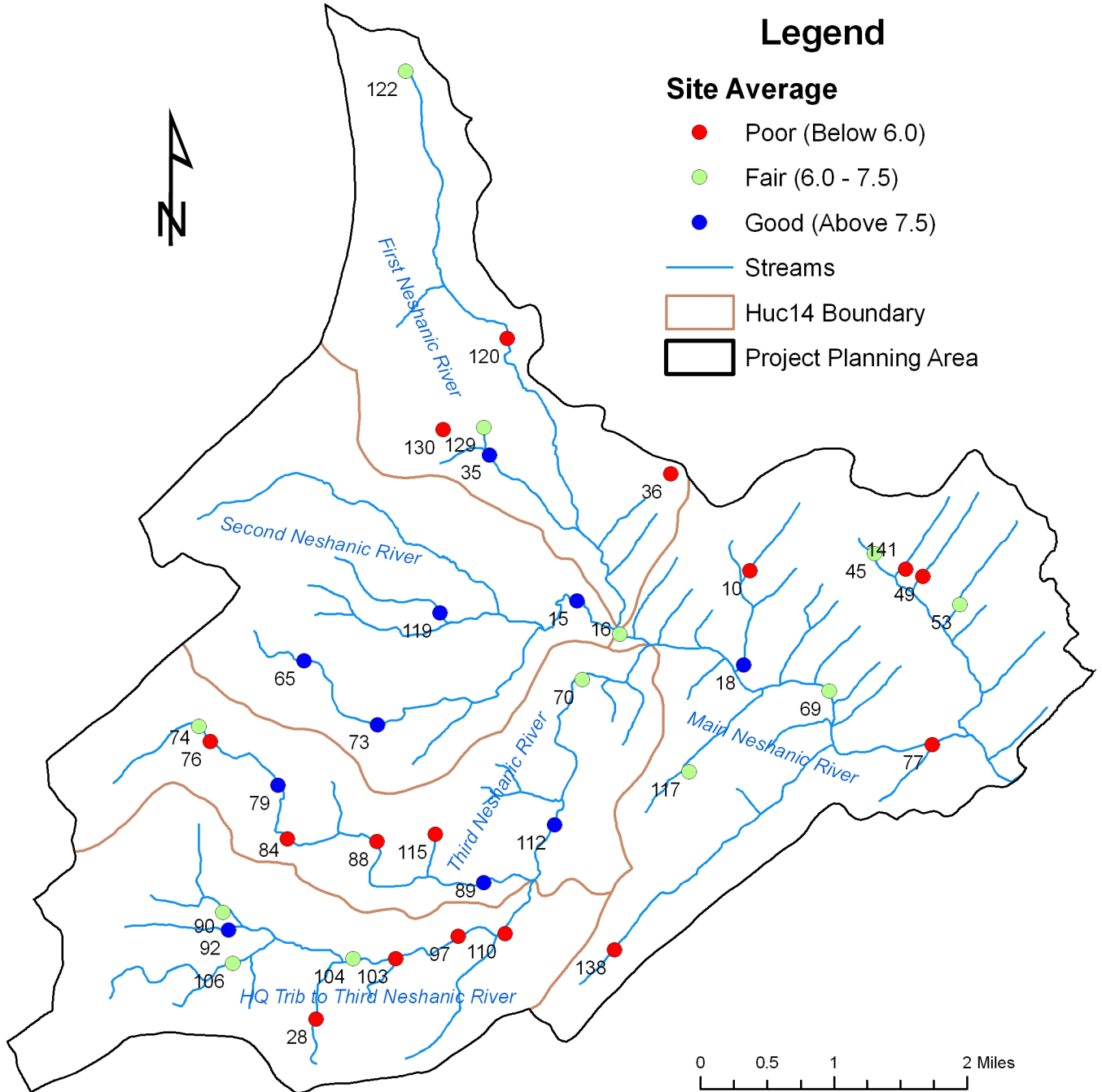
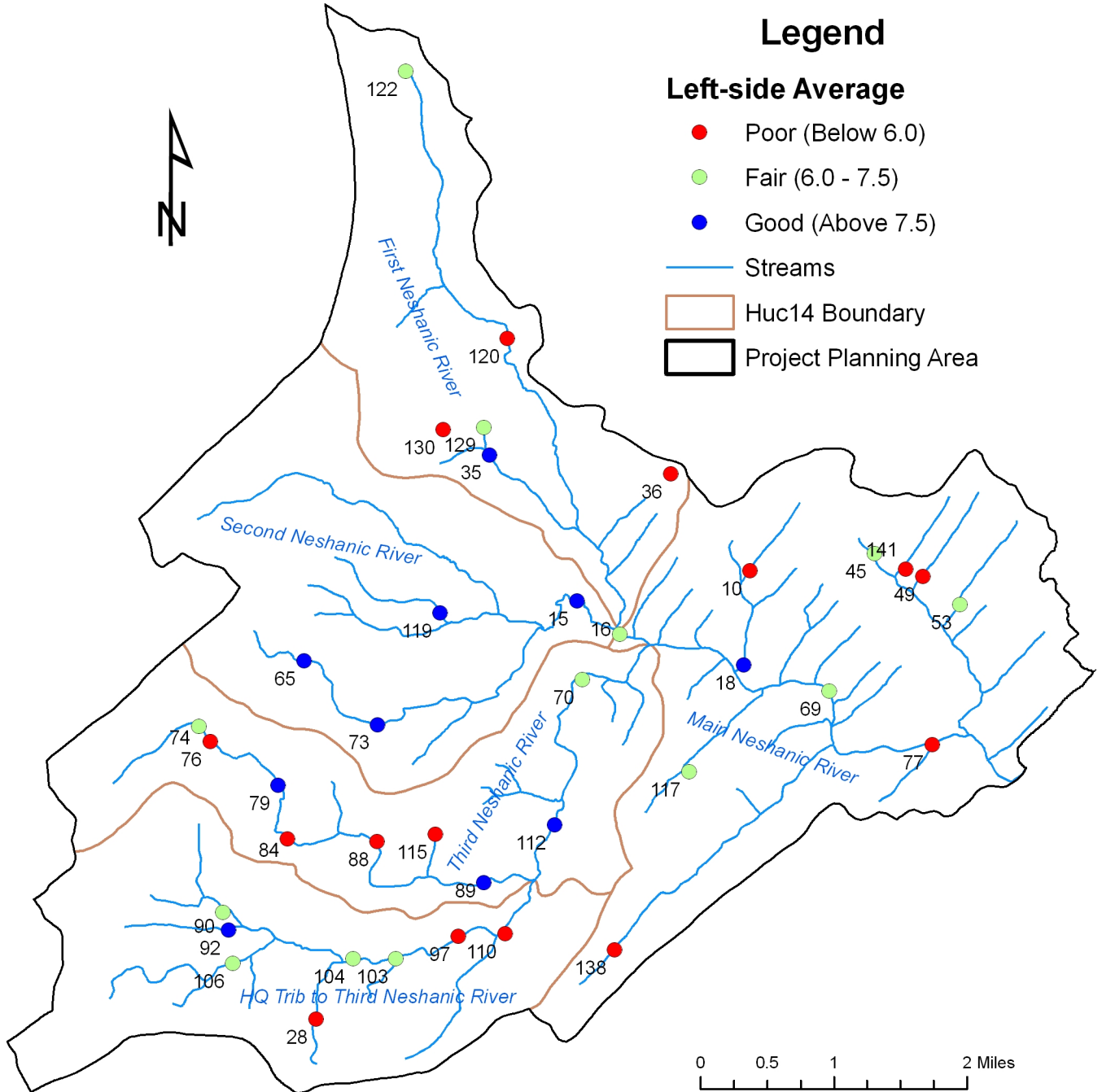


Stream Visual Assessment Protocol (SVAP) Analysis Neshanic River Watershed, New Jersey



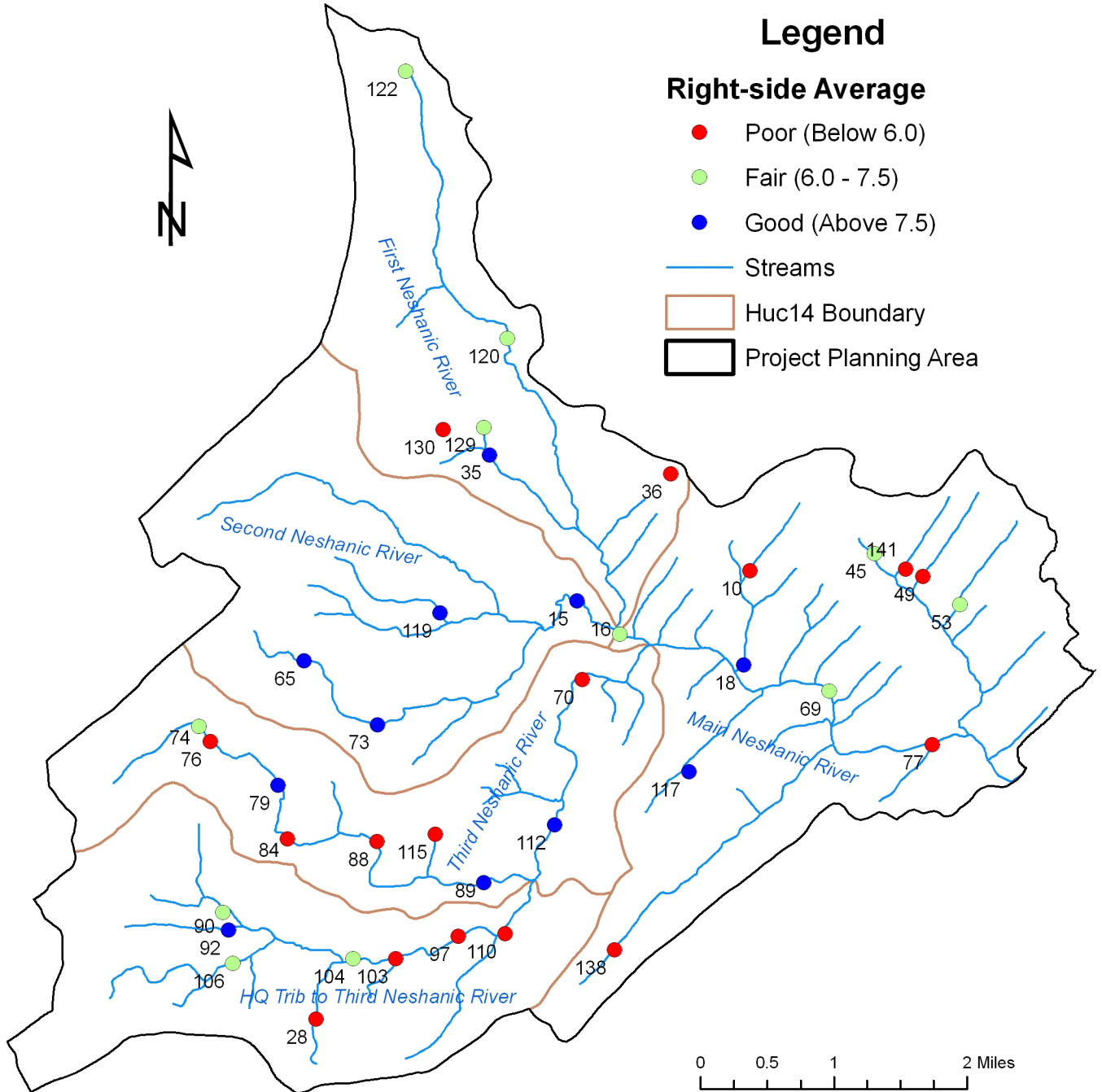
SVAP is conducted by volunteers organized by South Branch Watershed Association. This map was developed by New Jersey Institute of Technology in February 2010 using New Jersey Department of Environmental Protection Geographic Information System digital data, but this secondary product has not been verified by NJDEP and is not State-authorized.

Stream Visual Assessment Protocol (SVAP) Analysis Neshanic River Watershed, New Jersey



SVAP is conducted by volunteers organized by South Branch Watershed Association. This map was developed by New Jersey Institute of Technology in February 2010 using New Jersey Department of Environmental Protection Geographic Information System digital data, but this secondary product has not been verified by NJDEP and is not State-authorized.

Stream Visual Assessment Protocol (SVAP) Analysis Neshanic River Watershed, New Jersey



SVAP is conducted by volunteers organized by South Branch Watershed Association. This map was developed by New Jersey Institute of Technology in February 2010 using New Jersey Department of Environmental Protection Geographic Information System digital data, but this secondary product has not been verified by NJDEP and is not State-authorized.

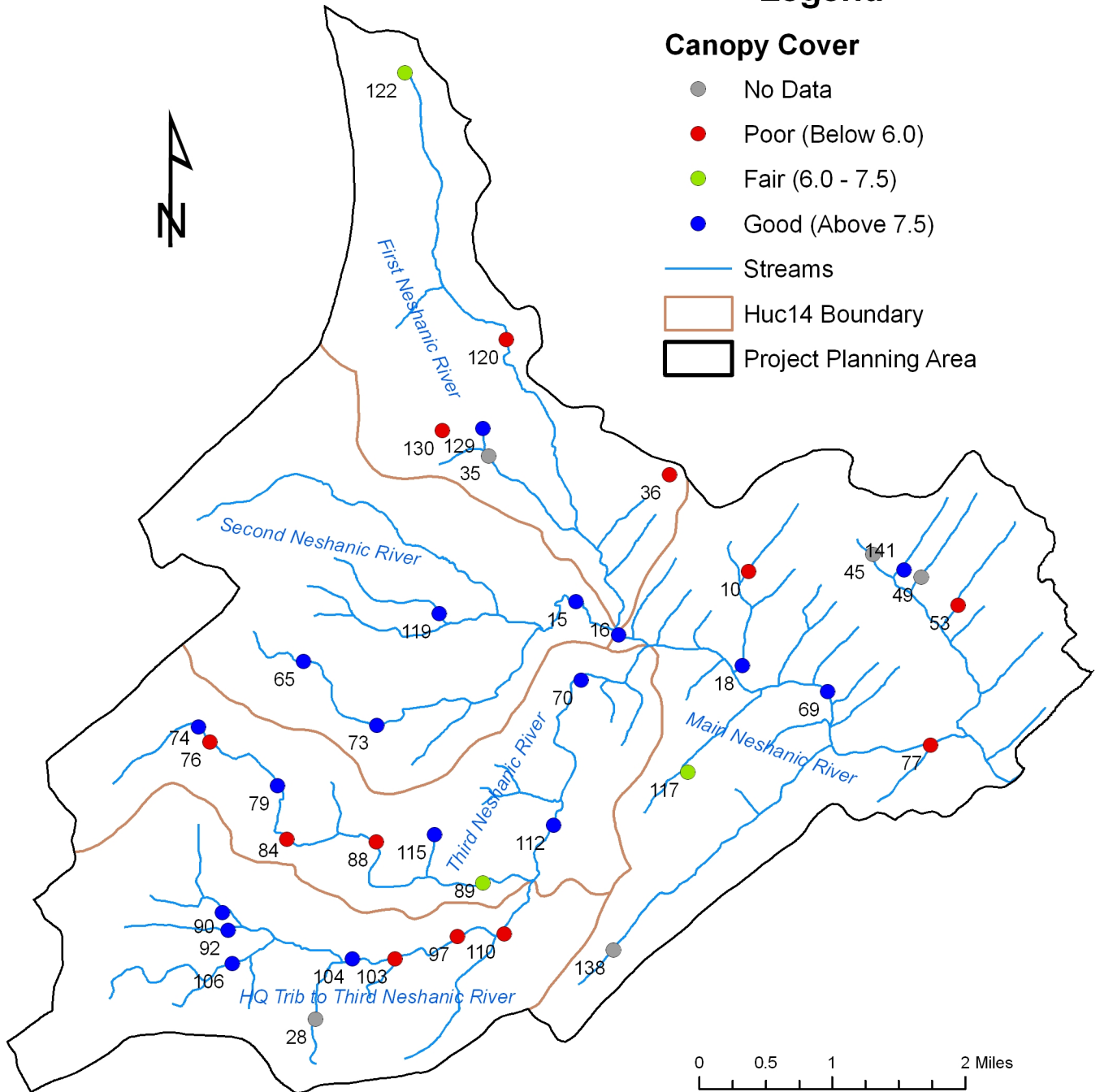
Stream Visual Assessment Protocol (SVAP) Analysis Neshanic River Watershed, New Jersey

Legend

Canopy Cover

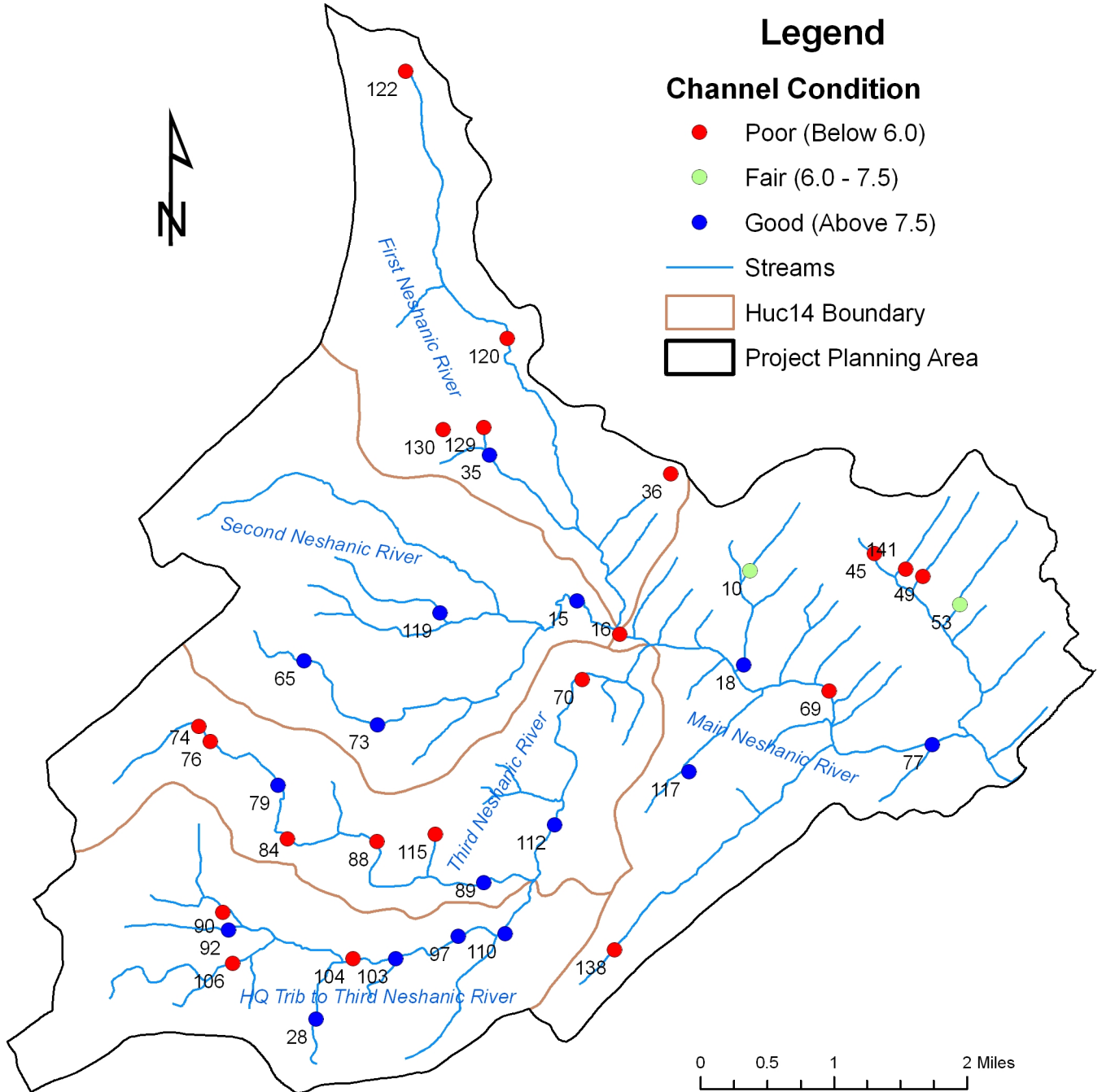
- No Data
- Poor (Below 6.0)
- Fair (6.0 - 7.5)
- Good (Above 7.5)

- Streams
- ▭ Huc14 Boundary
- ▭ Project Planning Area



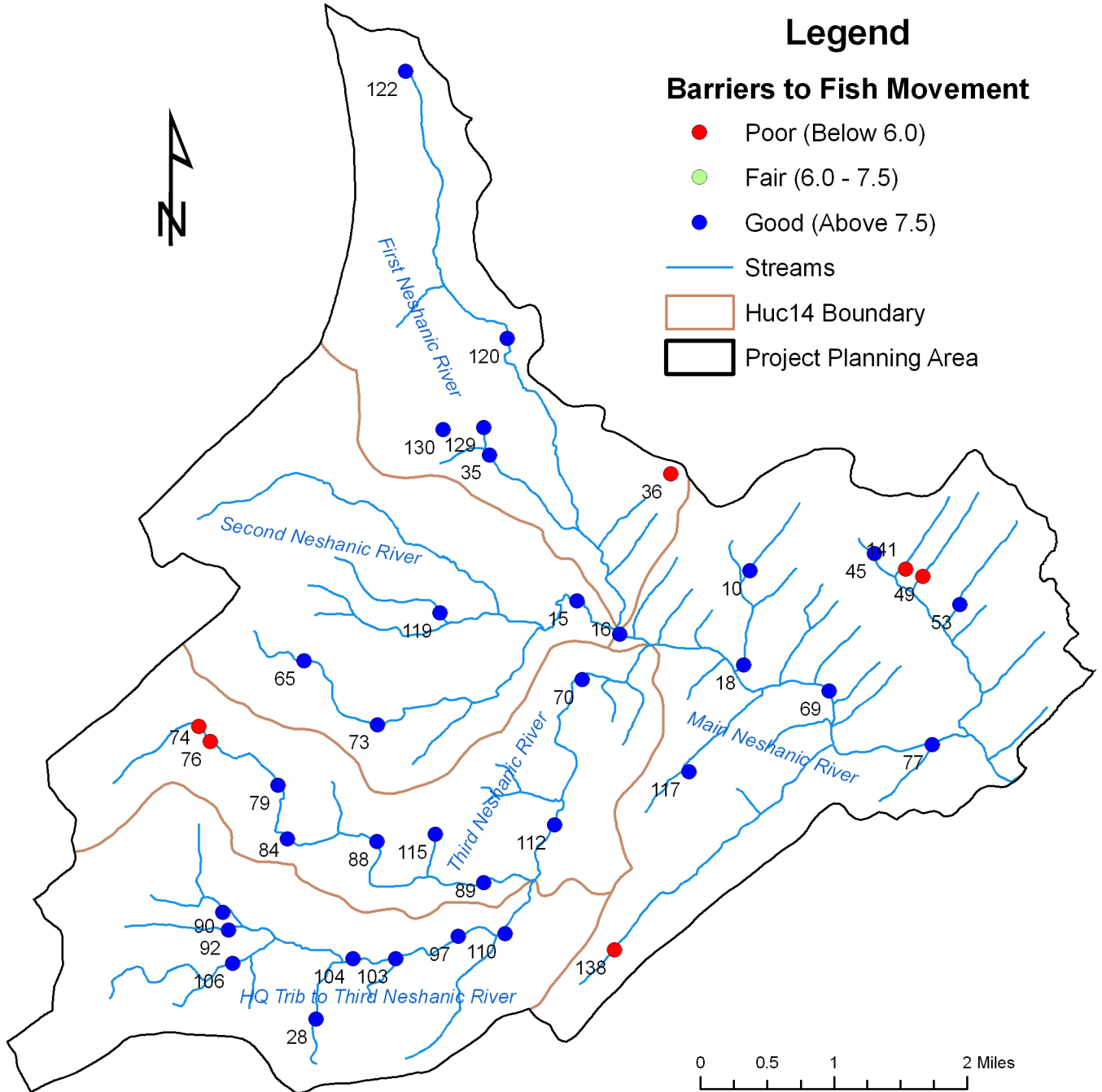
SVAP is conducted by volunteers organized by South Branch Watershed Association. This map was developed by New Jersey Institute of Technology in February 2010 using New Jersey Department of Environmental Protection Geographic Information System digital data, but this secondary product has not been verified by NJDEP and is not State-authorized.

Stream Visual Assessment Protocol (SVAP) Analysis Neshanic River Watershed, New Jersey



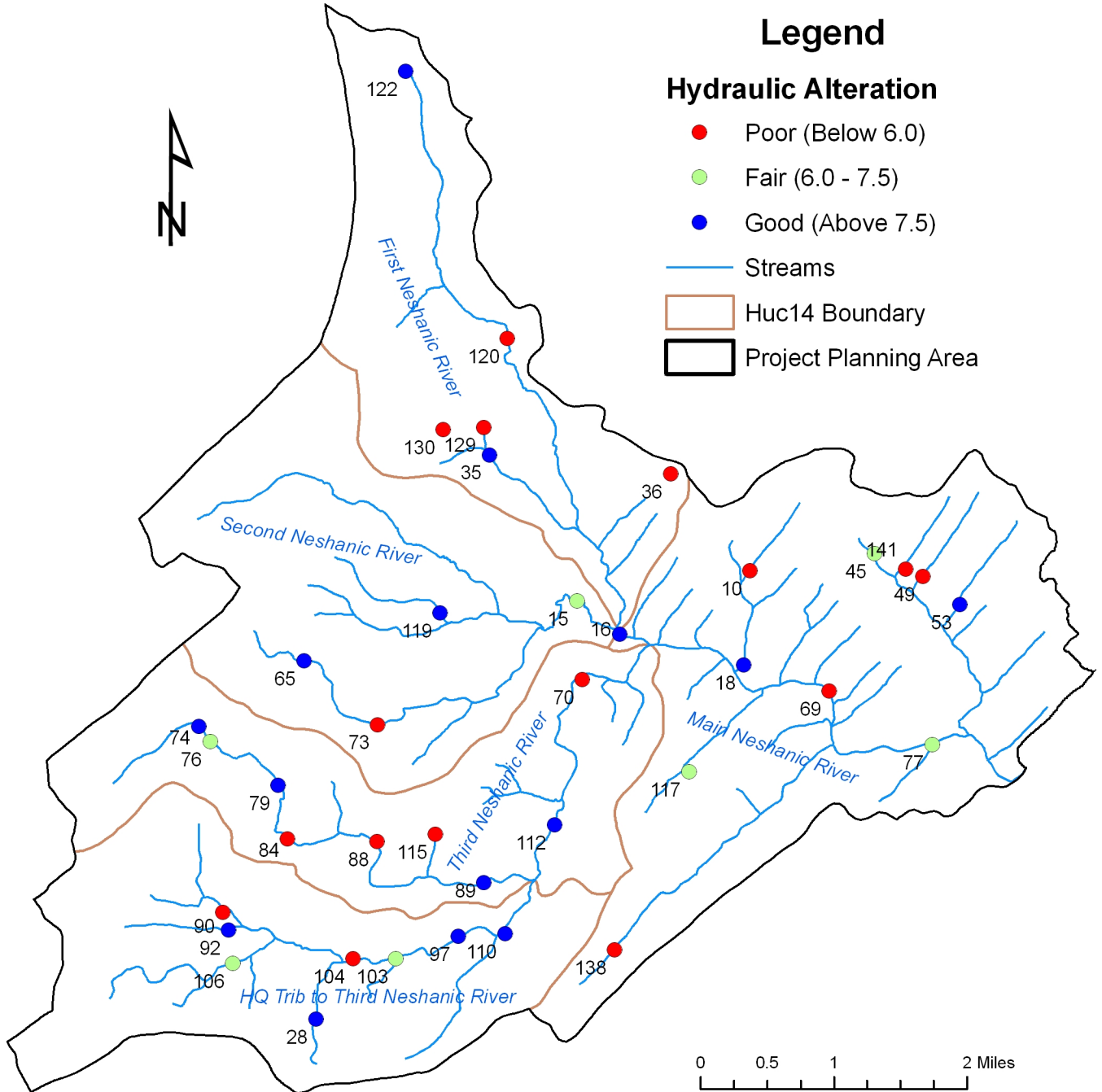
SVAP is conducted by volunteers organized by South Branch Watershed Association. This map was developed by New Jersey Institute of Technology in February 2010 using New Jersey Department of Environmental Protection Geographic Information System digital data, but this secondary product has not been verified by NJDEP and is not State-authorized.

Stream Visual Assessment Protocol (SVAP) Analysis Neshanic River Watershed, New Jersey



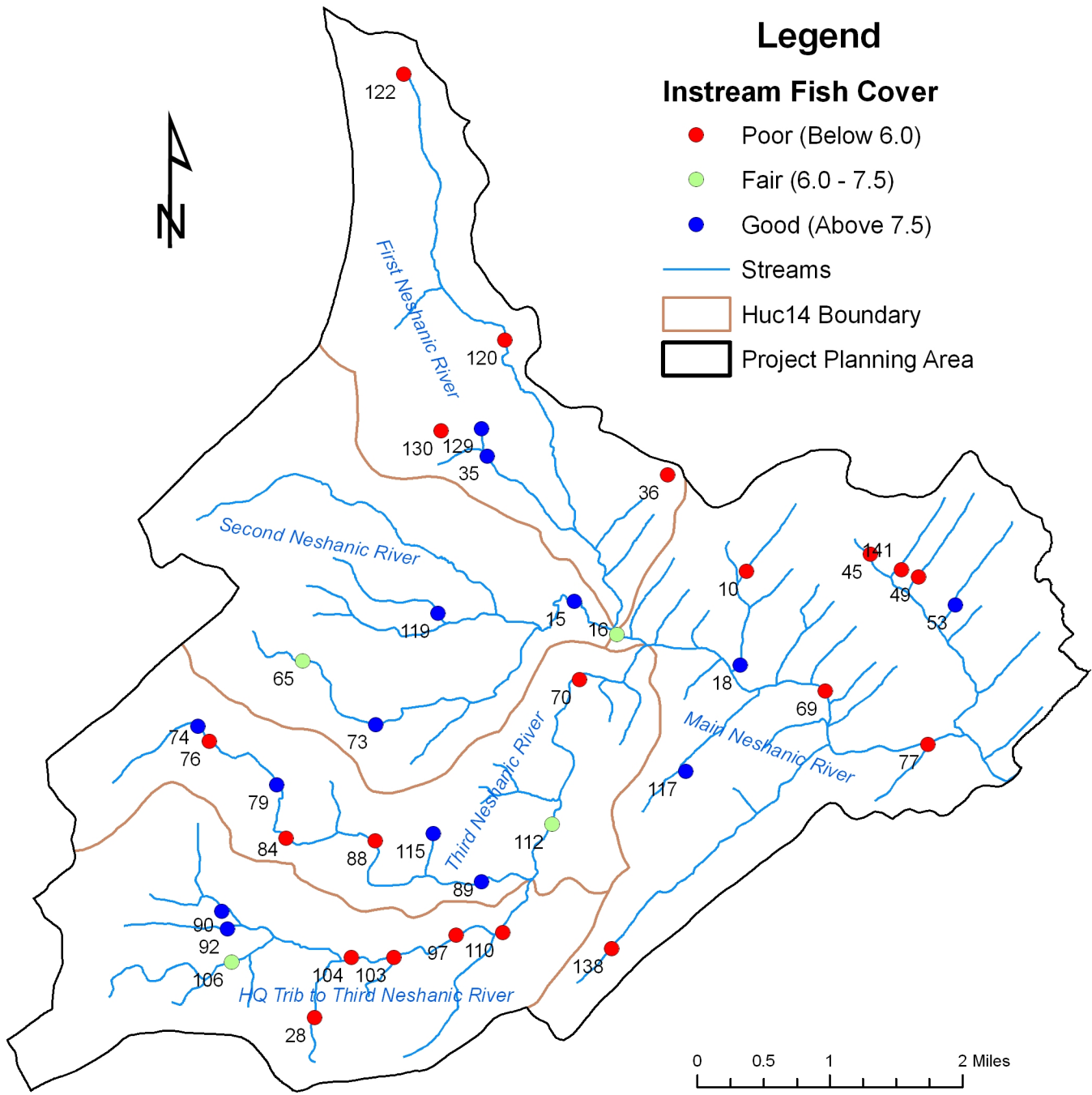
SVAP is conducted by volunteers organized by South Branch Watershed Association. This map was developed by New Jersey Institute of Technology in February 2010 using New Jersey Department of Environmental Protection Geographic Information System digital data, but this secondary product has not been verified by NJDEP and is not State-authorized.

Stream Visual Assessment Protocol (SVAP) Analysis Neshanic River Watershed, New Jersey



SVAP is conducted by volunteers organized by South Branch Watershed Association. This map was developed by New Jersey Institute of Technology in February 2010 using New Jersey Department of Environmental Protection Geographic Information System digital data, but this secondary product has not been verified by NJDEP and is not State-authorized.

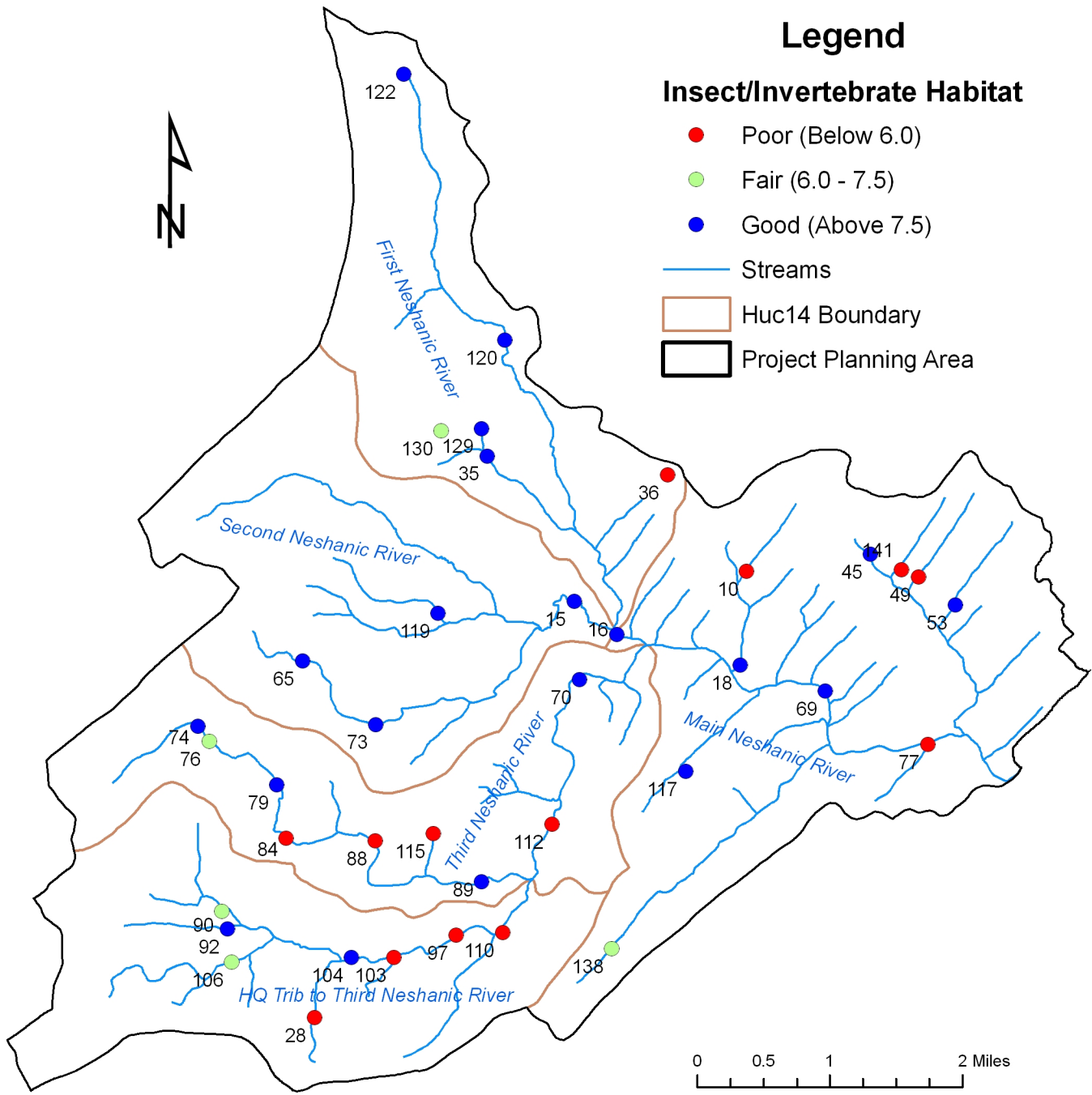
Stream Visual Assessment Protocol (SVAP) Analysis Neshanic River Watershed, New Jersey



SVAP is conducted by volunteers organized by South Branch Watershed Association. This map was developed by New Jersey Institute of Technology in February 2010 using New Jersey Department of Environmental Protection Geographic Information System digital data, but this secondary product has not been verified by NJDEP and is not State-authorized.



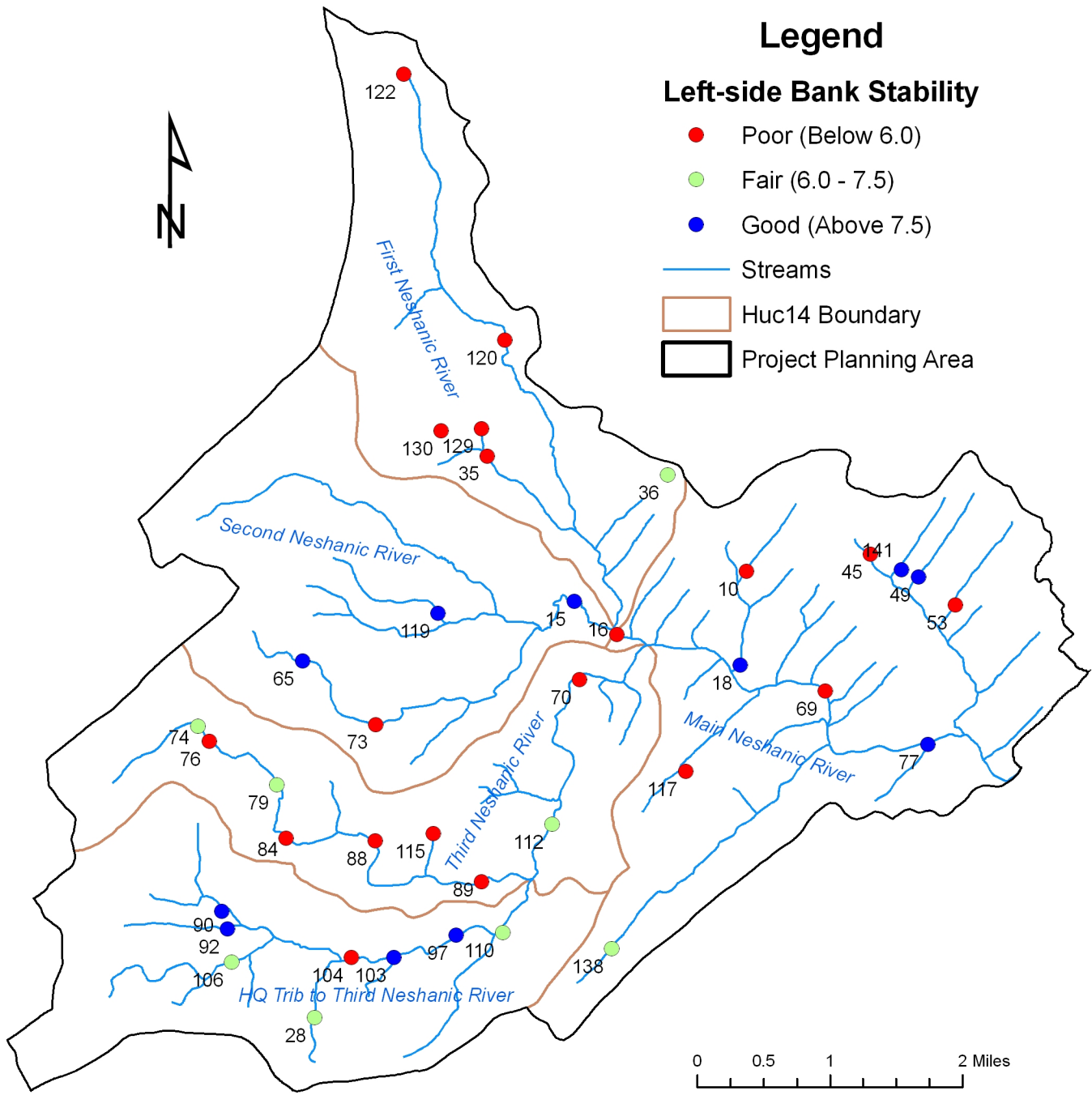
Stream Visual Assessment Protocol (SVAP) Analysis Neshanic River Watershed, New Jersey



SVAP is conducted by volunteers organized by South Branch Watershed Association. This map was developed by New Jersey Institute of Technology in February 2010 using New Jersey Department of Environmental Protection Geographic Information System digital data, but this secondary product has not been verified by NJDEP and is not State-authorized.



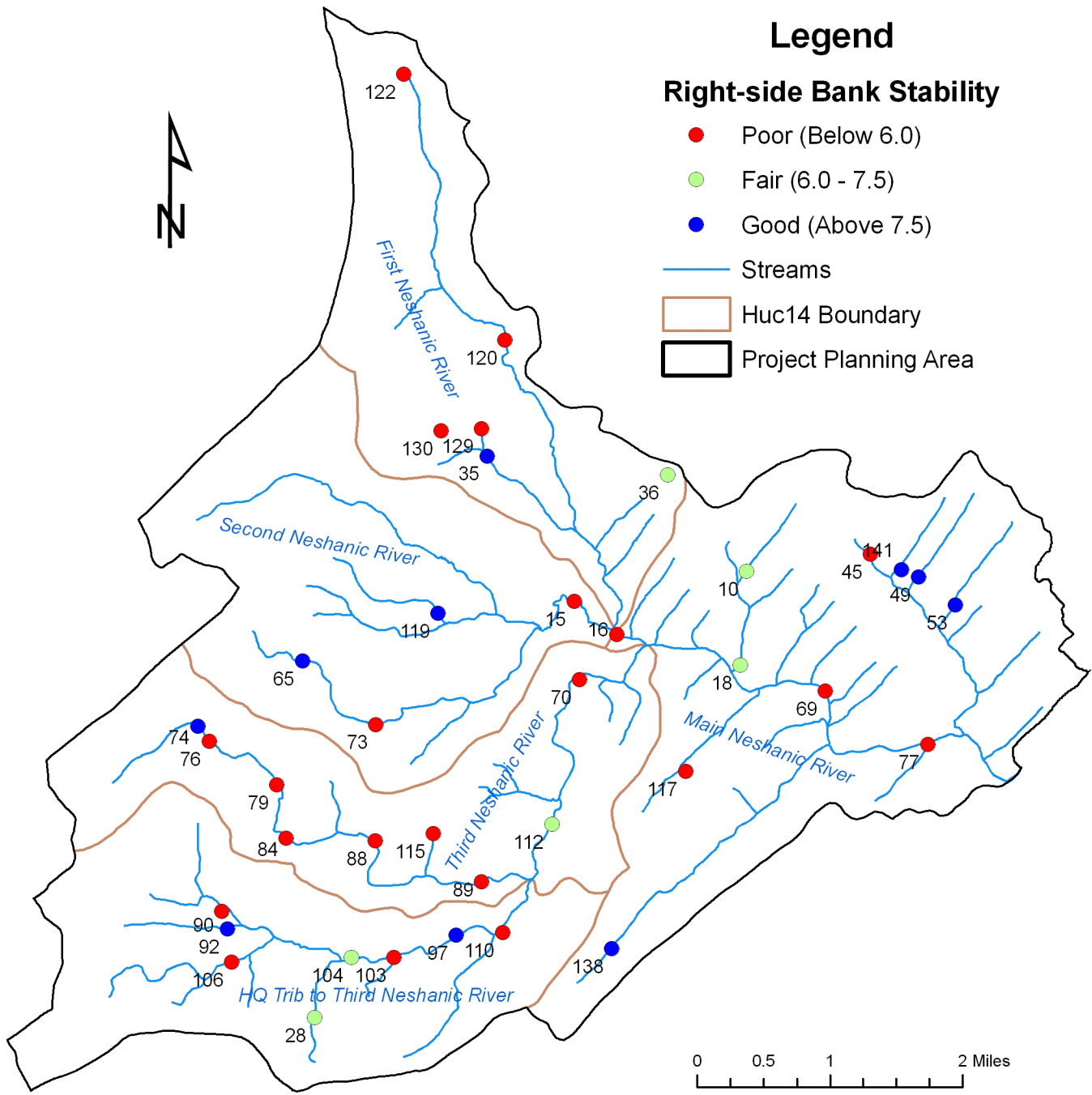
Stream Visual Assessment Protocol (SVAP) Analysis Neshanic River Watershed, New Jersey



SVAP is conducted by volunteers organized by South Branch Watershed Association. This map was developed by New Jersey Institute of Technology in February 2010 using New Jersey Department of Environmental Protection Geographic Information System digital data, but this secondary product has not been verified by NJDEP and is not State-authorized.



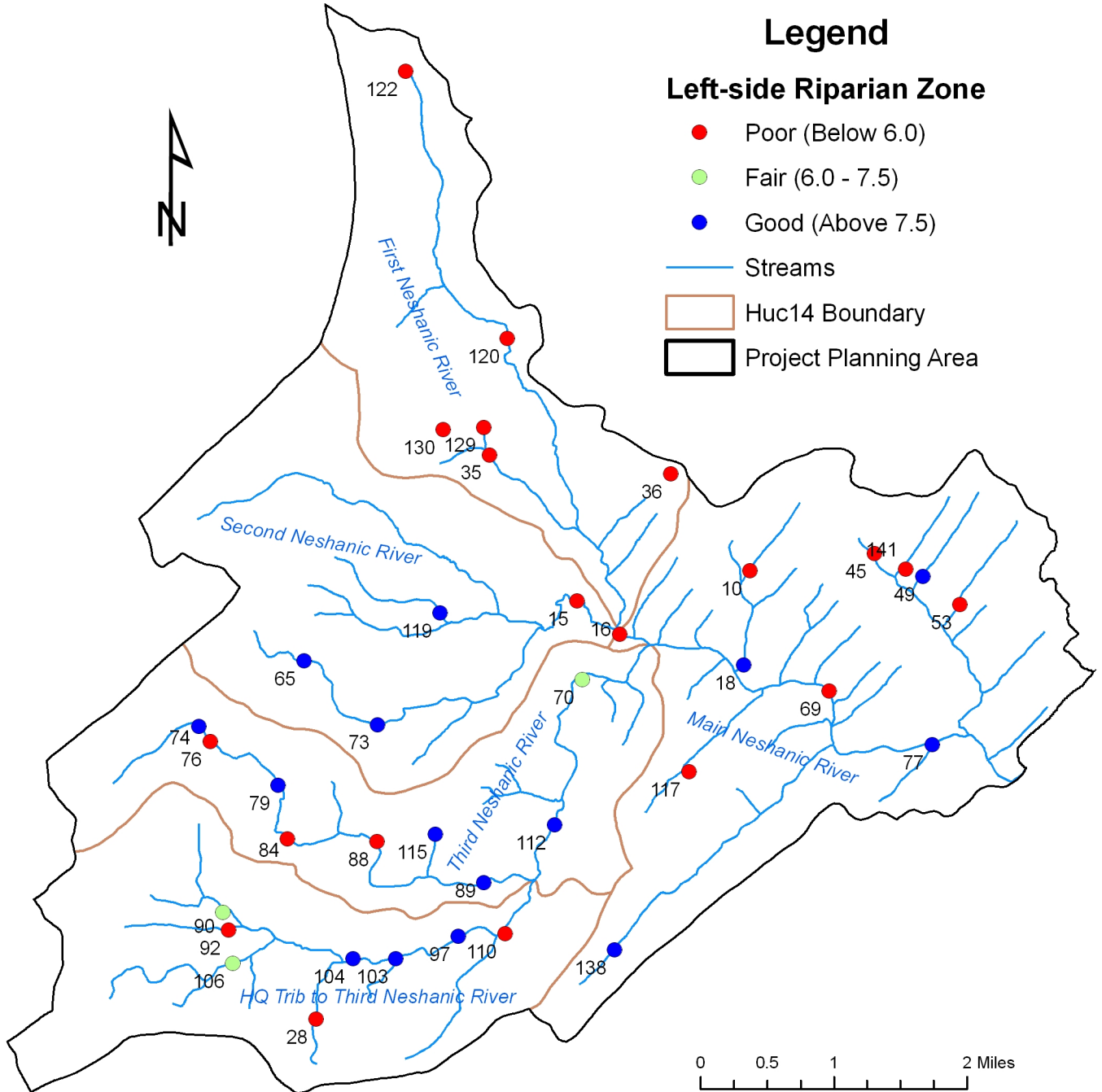
Stream Visual Assessment Protocol (SVAP) Analysis Neshanic River Watershed, New Jersey



SVAP is conducted by volunteers organized by South Branch Watershed Association. This map was developed by New Jersey Institute of Technology in February 2010 using New Jersey Department of Environmental Protection Geographic Information System digital data, but this secondary product has not been verified by NJDEP and is not State-authorized.

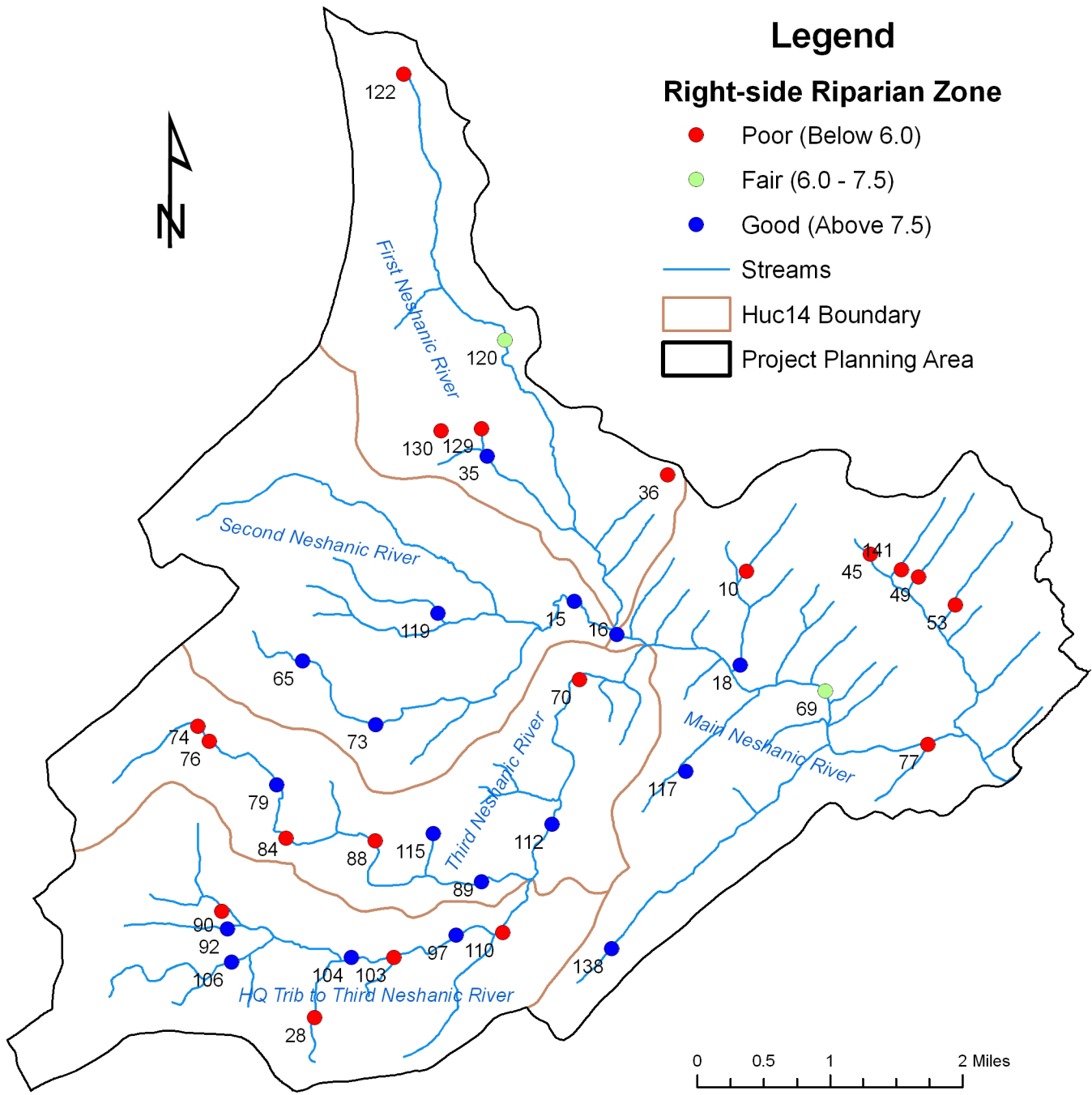


Stream Visual Assessment Protocol (SVAP) Analysis Neshanic River Watershed, New Jersey



SVAP is conducted by volunteers organized by South Branch Watershed Association. This map was developed by New Jersey Institute of Technology in February 2010 using New Jersey Department of Environmental Protection Geographic Information System digital data, but this secondary product has not been verified by NJDEP and is not State-authorized.

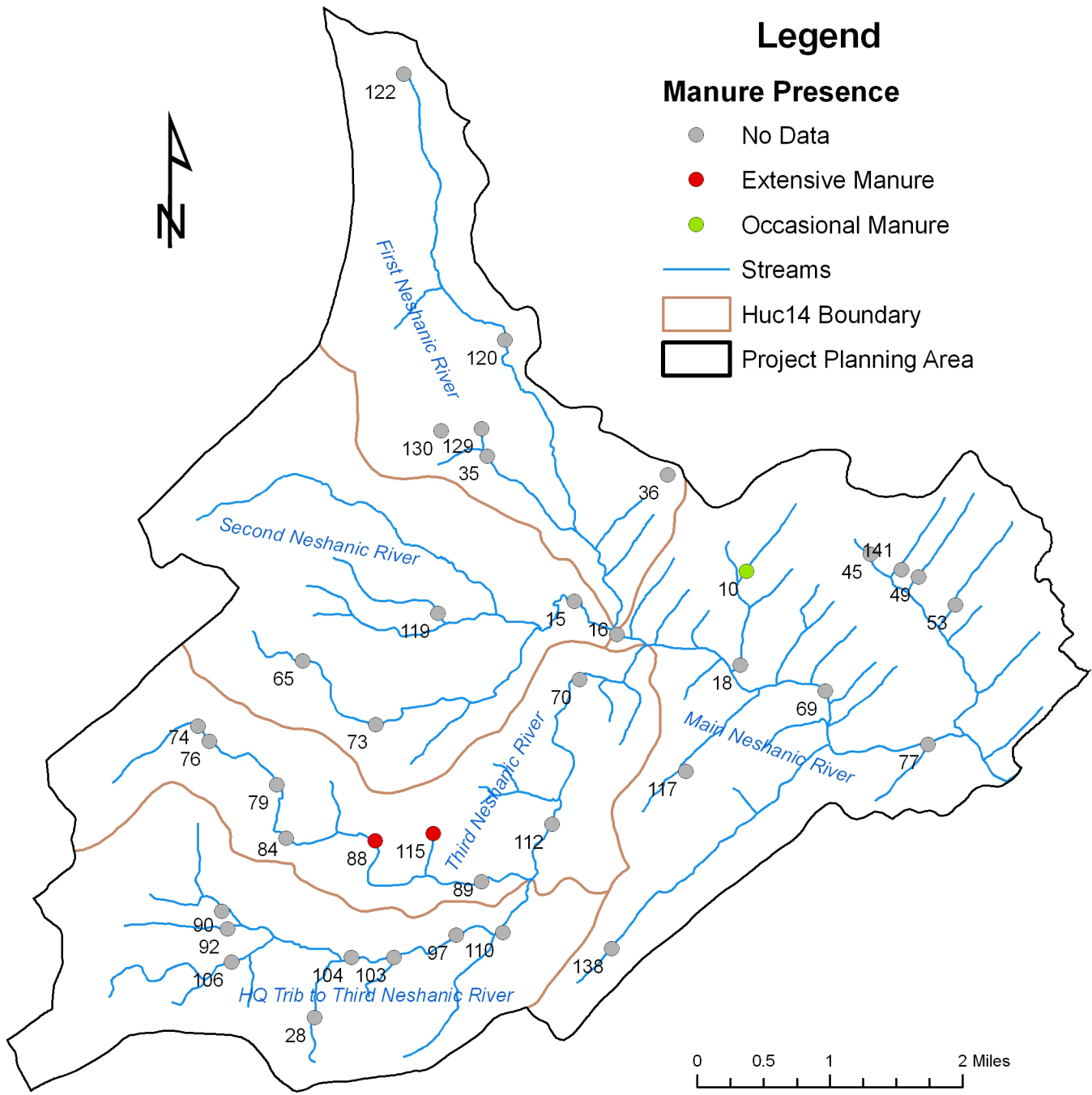
Stream Visual Assessment Protocol (SVAP) Analysis Neshanic River Watershed, New Jersey



SVAP is conducted by volunteers organized by South Branch Watershed Association. This map was developed by New Jersey Institute of Technology in February 2010 using New Jersey Department of Environmental Protection Geographic Information System digital data, but this secondary product has not been verified by NJDEP and is not State-authorized.



Stream Visual Assessment Protocol (SVAP) Analysis Neshanic River Watershed, New Jersey



SVAP is conducted by volunteers organized by South Branch Watershed Association. This map was developed by New Jersey Institute of Technology in February 2010 using New Jersey Department of Environmental Protection Geographic Information System digital data, but this secondary product has not been verified by NJDEP and is not State-authorized.



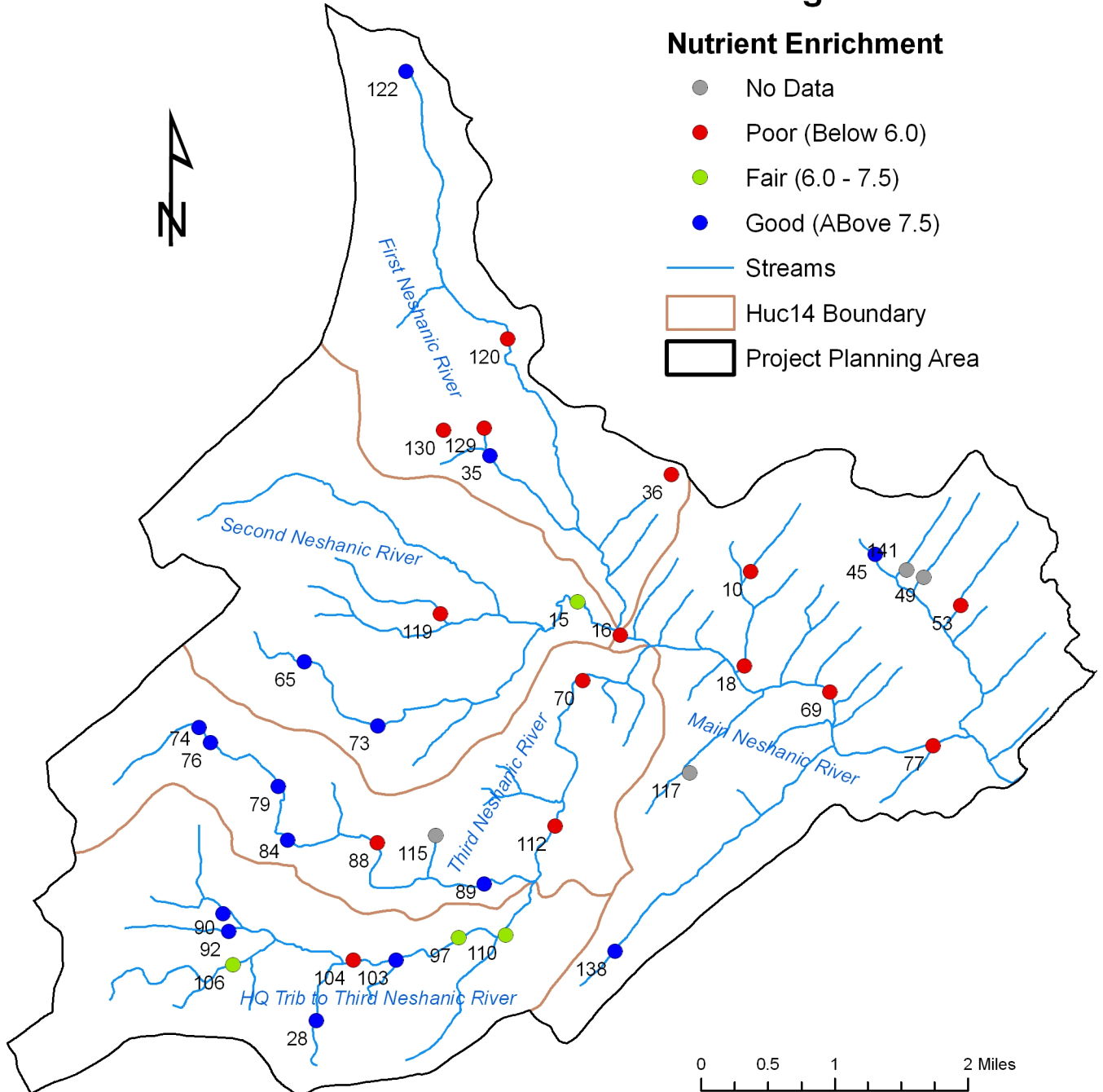
Stream Visual Assessment Protocol (SVAP) Analysis Neshanic River Watershed, New Jersey

Legend

Nutrient Enrichment

- No Data
- Poor (Below 6.0)
- Fair (6.0 - 7.5)
- Good (Above 7.5)

- Streams
- ▭ Huc14 Boundary
- ▭ Project Planning Area



SVAP is conducted by volunteers organized by South Branch Watershed Association. This map was developed by New Jersey Institute of Technology in February 2010 using New Jersey Department of Environmental Protection Geographic Information System digital data, but this secondary product has not been verified by NJDEP and is not State-authorized.

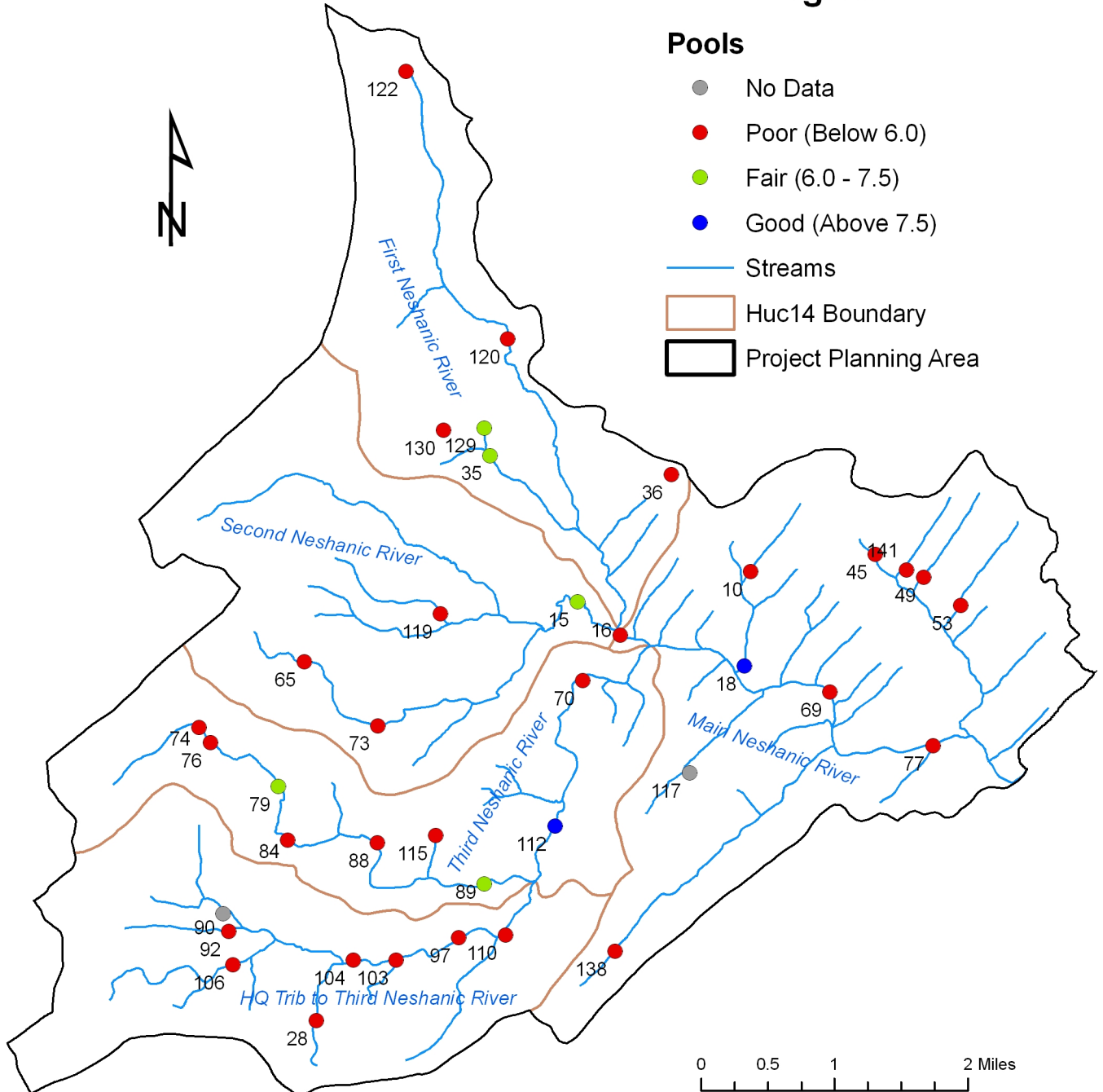
Stream Visual Assessment Protocol (SVAP) Analysis Neshanic River Watershed, New Jersey

Legend

Pools

- No Data
- Poor (Below 6.0)
- Fair (6.0 - 7.5)
- Good (Above 7.5)

- Streams
- ▭ Huc14 Boundary
- ▭ Project Planning Area



SVAP is conducted by volunteers organized by South Branch Watershed Association. This map was developed by New Jersey Institute of Technology in February 2010 using New Jersey Department of Environmental Protection Geographic Information System digital data, but this secondary product has not been verified by NJDEP and is not State-authorized.

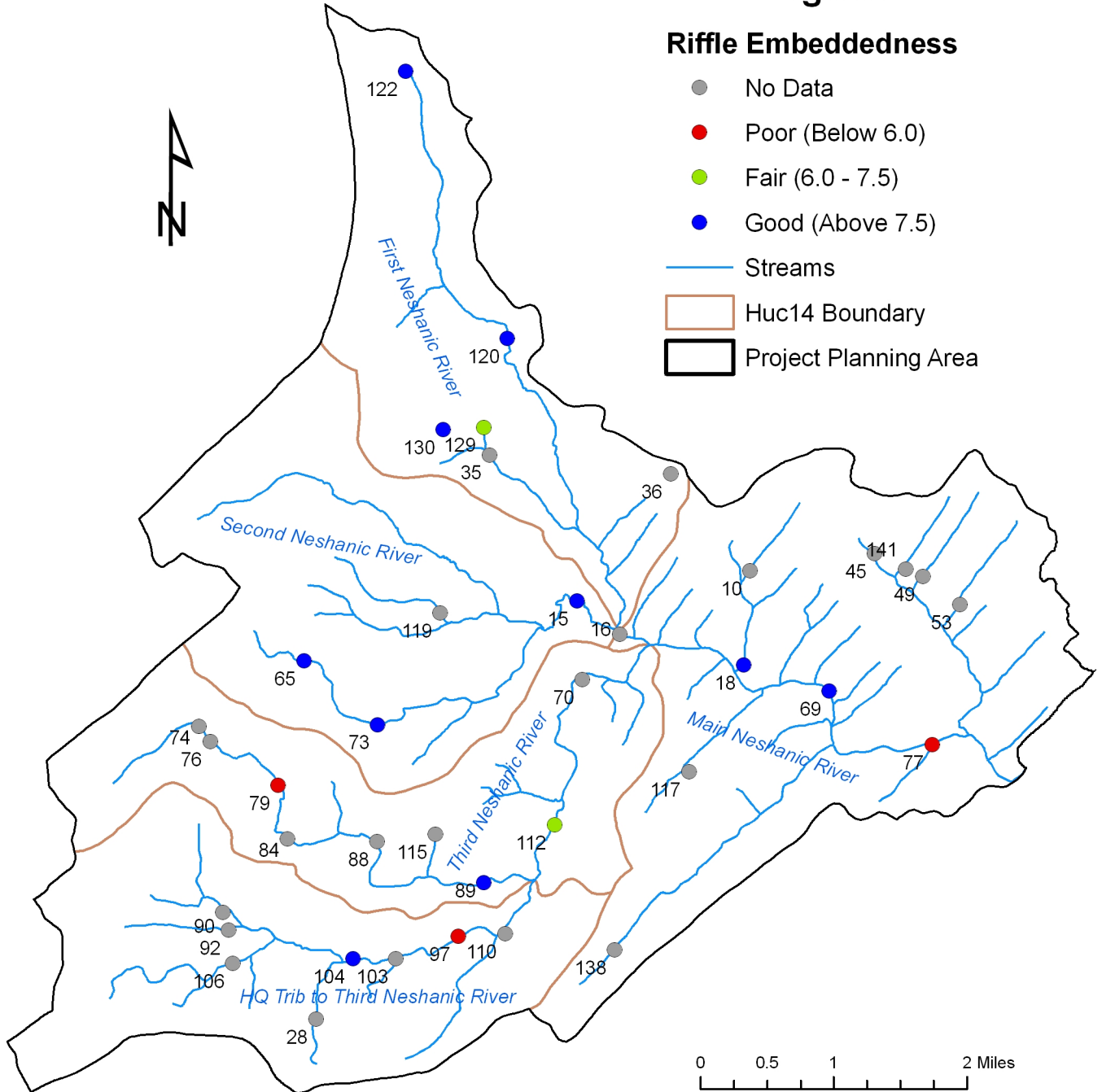
Stream Visual Assessment Protocol (SVAP) Analysis Neshanic River Watershed, New Jersey

Legend

Riffle Embeddedness

- No Data
- Poor (Below 6.0)
- Fair (6.0 - 7.5)
- Good (Above 7.5)

- Streams
- ▭ Huc14 Boundary
- ▭ Project Planning Area



SVAP is conducted by volunteers organized by South Branch Watershed Association. This map was developed by New Jersey Institute of Technology in February 2010 using New Jersey Department of Environmental Protection Geographic Information System digital data, but this secondary product has not been verified by NJDEP and is not State-authorized.

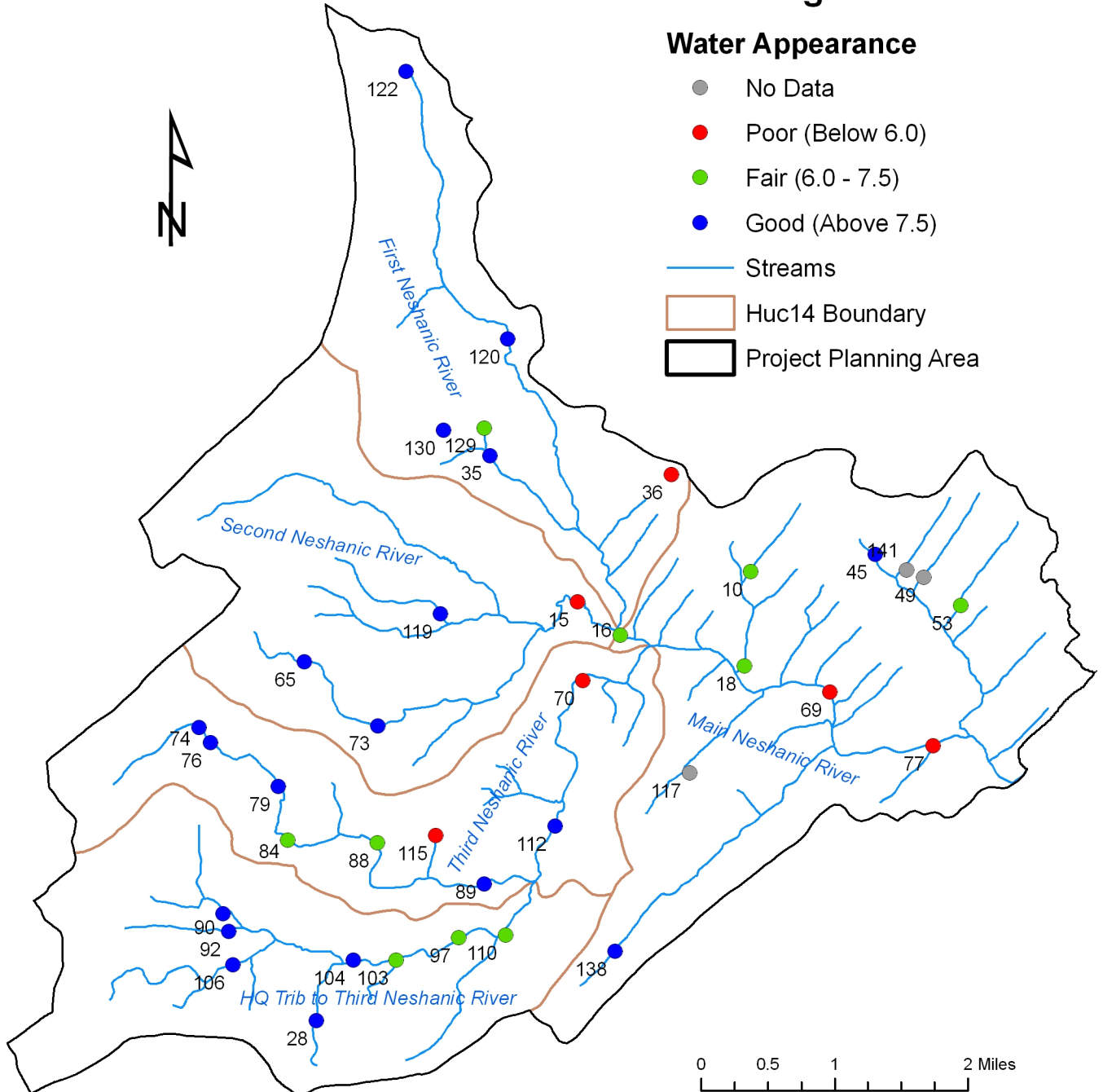
Stream Visual Assessment Protocol (SVAP) Analysis Neshanic River Watershed, New Jersey

Legend

Water Appearance

- No Data
- Poor (Below 6.0)
- Fair (6.0 - 7.5)
- Good (Above 7.5)

- Streams
- ▭ Huc14 Boundary
- ▭ Project Planning Area



SVAP is conducted by volunteers organized by South Branch Watershed Association. This map was developed by New Jersey Institute of Technology in February 2010 using New Jersey Department of Environmental Protection Geographic Information System digital data, but this secondary product has not been verified by NJDEP and is not State-authorized.